

TODAY'S

APRIL 2026



WITCH

VOL. 3 ISS. 4



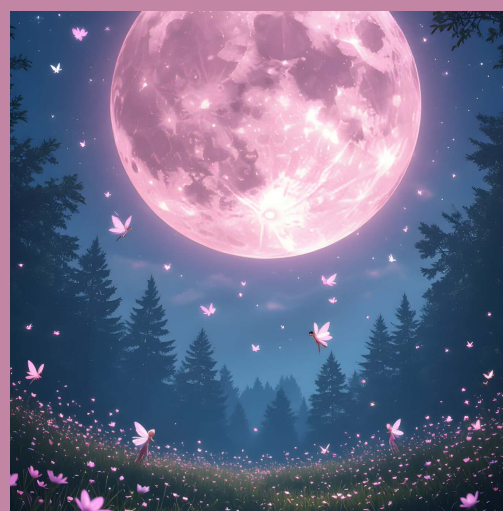
TODAY'S WITCH

APRIL 2026

The information covered in this Magazine is comprised of various sources from the Pagan community. We endeavor to cover topics from all traditions, and to be inclusive. The information provided is to be considered factual based on the research of the various authors represented therein. If there is any contradictory information, please feel free to contact the author of the article. We hope that everyone can enjoy the magazine and also learn from it. If there is a topic you wish to see also contact us and we'll be happy to try to include it in a future issue.

contactus@todayswitch.net

(570) 534-7628



USA --Pennsylvania

Covered Bridge Press, LLC.

570-534-7628

contactus@todayswitch.net

Edward Sott

Editors Board and Staff

Edward Sott—CEO. President

David Larsen—Sales and Marketing

Emily Thornton—Chief Managing Editor

Melina Valdejo—Staff Writer/Chief Admin Exec.

Bridgid—Marketing Director

Publishing Data

Publication Date(s)); Monthly on first of every month.

Deadlines for Submission: Due on 10th of each month prior to print.

Publication Area: Continental United States, Hawaii, Puerto Rico, Guam.

Shelf Life: Perpetual, Collectable Magazine.

Supplements: Wheel of the Year Book (HC) 80pg; Puzzle book (SC) 150pg; Witches' Traveling Companion (SC) \$7.95 with a yearly subscription.

Today's Witch is Copyrighted as a collective work, monthly issue by Covered Bridge Press LLC. © 2023. This work is a collaborative collection. All works belong exclusively to the Author(s).

Published by Covered Bridge Press, LLC. © 2026 Vol 3 Issue 4. Reasonable care is taken to ensure that "Today's Witch" articles and information is current at the time of publication. No responsibility can be taken by the Editors, or staff for any errors or omissions contained herein. Further more, responsibility for any losses, damages, or distress resulting from the information available in this magazine, is not the responsibility of Covered Bridge Press, LLC or its affiliates, and is protected under the First Amendment of the Constitution of the United States. Submissions are accepted to be paid upon time of publication. Covered Bridge Press, LLC. Does not guarantee the publication of your works. If they are printed by us you are acknowledging and giving us the right to print and reproduce your articles. The opinions expressed are those of the Authors and do not necessarily reflect the opinions of Covered Bridge Press, LLC. We reserve the right to refuse any articles or advertisements. We assume that the authors have full copyright ownership or permission. Covered Bridge Press LLC and Today's Witch will make all attempts to insure that copyrights are not violated. If any violations are discovered we will immediately retract the article and will attempt to inform the Owner of the violation. We reserve the right to republish any articles without extra compensation.

Table of Contents

Page 2.	Publishing Information'	Page 40	Egyptian Astrology—Isis
Page 3.	Table of Contents	Page 41	Eastern Astrology—Chinese Snake
Page 4.	Meet the staff	Page 42-43	Chakras Anahata
Page 5-6	Aphrodisias: Where Devotion and Desire Meet	Page 44	Planetary Forces Mars
Page 7-8	A Dictionary of Angels	Page 45	Tree of Life Sacred Paths of the Qabala Path 28
Page 9-10	The Tao Te Ching of Lao Tzu	Pag 46-48	Potions, Powders, Charms, and Spells
Page 11	Runes for April	Page 49-50	Fantastic Familiars
Page 12	Black Moon Lilith—April 2026	Page 51	Discovering Astrology's Big Three
Page 13	Ask Sebastian	Page 52	Gods and Goddesses—South America
Page 14-16	Casting Circles	Page 53	Monthly Correspondences—April
Page 17	Ex-Libris—Magickal Correspondences	Page 54	Mycology—Archer's Stinkhorn
Page 18-24	Interview with the author of Magickal Corre - spondences	Page 55	Pagan Calendar April 2026
Page 25	The Bards Corner	Page 56	Enchanted Exhibitions
Page 26	Allowing Ourselves by Olivia Pockett	Page 57-60	What is a Witch by Melissa Anderson
Page 27-29	Kitchen Witch's Cauldron	Page 61	How to Subscribe
Page 30	Tarot Spread—Reading Chakras	Page 62	Advertise with Us
Page 31	Adderwort		
Page32	Blue Lace Agate		
Page 33	A Month in I-Ching April-2026		
Page 34-37	Daily Correspondences		
Page 38	Faeries of the World—Black Angus		
Page 39	Mesoamerican Astrology—Miquitzli		



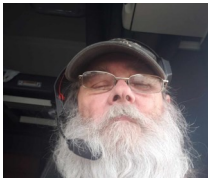
Meet the Staff

Edward Sott (CEO)



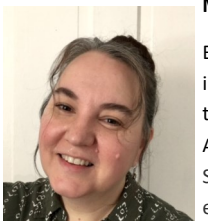
Edward Sott is a Theologian and Historian and run a Non-profit organization. And he's a military Veteran. He was since childhood inspired to write novels and plays. He currently resides in Pennsylvania and has traveled throughout the world. He is the founder and CEO of Covered Bridge Press LLC, and of "Today's Witch " Magazine. His goal is to educate the public and bring traditionalism back to the craft and its practices. He is an Alexandrian Wiccan High Priest and Elder.

David Larsen (Vice President)



David Larsen is an over the Road Commodities Relocation Engineer, (AKA truck driver) He is also a history buff and a word smith. He currently resides in Florida and wherever the road and his dog Joey might take him. He is also world traveled from his military experience and driving. David is Co-Author with Edward Sott of Two Novels A Time for Redemption and A time for Retribution he is also A Vice President of Covered Bridge Press, LLC and a member of the Board of Directors of "Today's Witch" magazine. He is an open-minded Christian and Friend of the Pagan Community. He understands the value of spiritualism.

Melina Valdejo (Staff Writer)



Being interested in many traditions and "finding the gold" in each one, Melina labels herself as an Eclectic and enjoys the concept of the "Spiritual Mosaic" as stated by Thomas Ashely-Farrand. Her strengths lie in personalizing her Spiritual path. As a Priestess of the Well of Avalon, she enjoys finding unique, practical approaches to situations and magical workings drawing from her direct inspiration and her ever-widening background. "By putting ourselves in alignment with deity we can rise above situations and find our true path, we are all 'in the process'". Melina is the owner of Pathways New Age Books & Gifts, a brick-and-mortar resource center honoring all traditions located in St Louis, Missouri. If you're a traveling author or artist, please contact her at Melina@pathwaysstl.com to get details on how to present at her shop.

Emily Thornton (Managing Editor)



My name is Emily Thornton (Emma Gardner) and I have my Masters in Journalism. I love editing work and working with others. I have written numerous articles along with having my own column with local newspapers for over 10 years. Even though I grew up in a fairly religious household, I have always felt a love of nature and the metaphysical. I have an affinity for green magic and I love reading tarot for people around me. I even opened my own little side business called Celtic Readings, Oils and Sundries. I love stories and providing perspective to people at a crossroads. I work with Brigid mainly, but love the Celtic pantheon of deities.



Christina Aul (Resident Crone/Staff Writer)

Is a silent partner of the PRC/UPCC who has been active in the online Pagan community for over 20 years. She is a writer, educator, and instructional designer who shares her home in Pennsylvania with her spouse and adult child, three dogs, two cats, and several previous residents of the property. She is a solitary Welsh-Celtic pagan with ancestral roots in Scotland, Ireland, and Norway. Raised in the United Methodist Church, Christina began exploring alternative faiths in her teens and thoroughly deconstructed from Christianity in her early 20s. She considers herself a green kitchen witch and enjoys the oddities of life.

"Brigid" (Marketing Director)



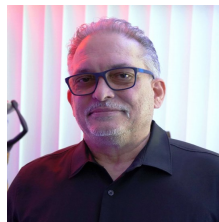
Brigid, our newest Magazine member with Celtic and Indigenous heritage, joins Today's Witch Magazine as Marketing Director, writer, and instructor. A certified astrologer since age nine, she studied Celtic Wiccan/Druidic Alchemy and served as her local coven's historian for several years. With over 40 years of experience and more than 800 clients, Brigid has taught advanced students, marketed magazines, and ghostwritten books. She holds a Bachelor of Science, ODS, and Holistic Practitioner Certification. Contact Information: Brigidsees@gmail.com or visit AstrologybyBrigid.com.

Sebastian (Magazine Advisor/Familiar)



Sebastian is a 5763 yr old denizen of the Otherworld He has come to Today's Witch to be a guide and to answer questions that have been neglected through the last many years. He enjoys helping the staff and appreciates the treats and scratches. If you have any questions you need answers to you can reach him through the editor@todayswitch.net Email. Please place in the subject line To Sebastian and he will respond in concurrent issues. You will find him appearing throughout the magazine.

Alex Aloma (Digital Creation Supervisor)



My name is Alexander Aloma, and art has been a driving force in my life for as long as I can remember. Creativity has always been more than a skill to me. It's been a way of seeing the world and finding meaning in it. Over the years, that passion grew into a vision to build something of my own, a brand that celebrates imagination, connection, and the beauty of collaboration. Starting a freelance business was both a dream and a journey, one that taught me the power of bringing ideas to life alongside others who share that same spark. Working with creative minds to turn vision into reality has become my purpose, and it continues to inspire me every day. Through it all, my son Matt has been by my side, helping to keep that energy, belief, and support so I can keep that dream alive. I have built more than a brand, it's about believing in the magic that happens when imagination meets heart.

Aphrodisias: Where Devotion and Desire Meet

By Melina Valdejo, owner of Pathways New Age Books

A note before we begin

Aphrodisias is a city that has witnessed centuries of devotion, creativity, and celebration. From the worship of Aphrodite to Roman patronage, Christian adaptation, and beyond, this sacred place has been shaped by countless people. This is a place of reverence, layered history — and of the people who continue to live alongside it today.

A year of sacred places

This article is part of our *Today's Witch Magazine* series exploring sacred sites through a spiritual and seasonal lens. Each month, we look at a place rooted in a unique tradition and ask: what does it still teach us today? As we enter **Beltane**, the sabbat of fertility, passion, and the full blooming of life, Aphrodisias offers a perfect reflection: a city devoted to the goddess of love, beauty, and vitality, where stone and spirit meet in celebration.

A city built for love and life

Aphrodisias rose in the fertile valley of what is now southwestern Turkey, centering around a temple dedicated to Aphrodite, goddess of love, fertility, and pleasure. The city's identity was inseparable from her presence; every column, every sculpture, every public space reflected devotion and reverence for life's creative energy.

The city flourished under Roman influence, gaining special privileges, tax exemptions, and renown for its artistic excellence. Sculptors from Aphrodisias were famous across the empire, creating works that celebrated gods, humans, and the earth itself. Every statue, every carved detail was a devotion, a kind of prayer offered through skill, creativity, and beauty.

Sacred marble and the fire of creation

Beltane is about fire — literal and metaphorical. It is the fire of growth, passion, fertility, and unrestrained life force. Aphrodisias embodies this fire in its buildings. Its quarries provided marble, and its sculptors turned raw stone into forms that celebrated love, desire, and divine beauty. The city itself became a temple of sensuality and creativity, a place where art and devotion intertwined.

Even as Aphrodisias transitioned through Christianization, the memory of its energy — its fire, fertility, and celebration — persisted in the stones. Beltane is a reminder that sacred life is never extinguished; it simply transforms, waiting for the right season to bloom again.

Beltane, fertility, and the rhythm of life

Beltane marks the peak of spring's awakening — the time when the earth is alive with growth, animals are courting, and the first fruits of labor begin to appear. Aphrodisias mirrors this energy. Its temples and public spaces were built to honor love, fertility, and abundance, reflecting humanity's desire to align with nature's vitality.

In the city, devotion was not passive; it was a celebration — through ritual, art, and daily life. Like Beltane fires, the city radiated energy that invited participation, passion, and connection. For modern witches, Aphrodisias invites us to embrace desire, creativity, and the joy of life fully expressed.

Why Aphrodisias still matters at Beltane

Aphrodisias teaches us that sacred energy thrives in expression, celebration, and devotion. Stones carved with care, temples aligned with intention, and art that elevates both the mundane and divine all remind us: vitality and love are practices, not just feelings. Beltane invites us to carry this wisdom into our lives, celebrating fertility in its many forms — creativity, relationships, personal growth, and the pleasures of the body and spirit alike.

A simple Beltane reflection

To work with Aphrodisias' Beltane energy:

- Light a candle or small fire to honor the returning warmth and life.
- Take a few slow breaths and feel your body's vitality.
- Reflect on what you wish to **create, nurture, or celebrate** this season — in your heart, home, or practice.
- If possible, hold a small stone or piece of marble as a symbol of strength and enduring beauty.
- Close by imagining your intentions rising like smoke to mingle with the sky.
-

Let this be a reminder that creation and celebration are sacred acts.

Journal Reflections

1. What brings passion and joy into my life right now?
2. Where am I ready to plant seeds of growth — for love, creativity, or community?
3. How can I celebrate my body, my talents, or my spirit in this season?
4. What old energy can I release to make space for new life?
5. How do I honor the sacred in my relationships and daily routines?
6. What would it feel like to live with the vitality of Aphrodisias — fully present and expressive?
7. How can I invite ritual, creativity, and play into my life this Beltane?

Embracing Beltane's fire

Aphrodisias reminds us that devotion, beauty, and vitality are inseparable. Like the Beltane fire, sacred energy is not meant to be hidden or restrained — it is meant to shine, to inspire, and to transform. As we celebrate the height of spring's awakening, the city whispers: life is meant to be lived fully, passionately, and creatively, in devotion to both the earth and the spirit.

Credit:

This series and article were inspired by the "Sacred Sites Oracle Cards" by Barbara Meiklejohn-Free. Published in 2015 by Watkins Publishing.

Sources:

<https://whc.unesco.org/en/list/1519>

<https://whc.unesco.org/en/decisions/6900/>

<https://whc.unesco.org/en/list/1519/>

<https://www.britannica.com/place/Aphrodisias>

<https://historytools.org/stories/aphrodisias-the-ancient-city-of-love-and-art>



A Dictionary of Angels

Hannibal—Hashesiyah

HANIBAL **חניבעל** is a minor god in Akkadian mythology, one of the attendants of the storm-god Adad.

HANIEL (Hebrew: **הניאל** "Joy of God" or Hebrew: **הניאל** "Grace of God,"; Coptic: *Avanuyλ*; Arabic: 'Anya'il), also known as ANAEL, HANAEL or ANIEL, is an angel in Jewish lore and angelology, and is often included in lists as being one of the seven archangels. Haniel is generally associated with the planet Venus, and is the archangel of the sephirah Netzach. The name Haniel probably derives from Hebrew hana'ah, "joy," "pleasure" (qualities associated with Venus) + the suffix -el, "God." Haniel is one of the archangels encrypted in the *Sigillum Dei Aemeth* of Dr. John Dee and Edward Kelly.

HANNINIEL **חניניאל** in Aramaic incantation rites, an angel appealed to in love charms.

HANNUEL **חננאל** An angel who exercises dominion over the zodiacal sign of Capricorn.

HANOZIZ **חננוזי** An angel of the 8th hour of the night serving under Narcoriel.

HANOZOS **חננוז** An angel of the 9th hour of the night serving under Narcoriel.

HANTIEL **חנטיאל** An angel of the 3rd hour of the day serving under Veguaniel.

HANUM (Hanun) **חננום** Monday angel residing in the 1st Heaven and invoked from the South.

HA-QADOSCH BERAKHA **ברכה הקדוש** name for the "Holy and Blessed One" called on in Solomonic conjurations.

HAQEMEL **חאקמל** One of the 72 angels of the zodiac, as listed in Runes.

HARABAEEL (Harabiel) **חארבאל** An angel with dominion over the earth.

HARAB-SERAPEL ("ravens of death") **חארב-סרפל** An averse sefira to Netzach, whose cortices are Theuniel and Baal Chanan. Harab-Serapel is the 7th of the 10 demons in the Asiatic world; he is also a leader in the infernal regions.

HARAHHEL **חארהל** in the cabala, an angel in charge of archives, libraries, and rare cabinets; also one of the 72 angels bearing the name of God Shemhamphorae.

HARARIEL **חארריאל** An angel's name found inscribed on an oriental charm for warding off evil.

HARBONAH ("ass driver") **חארבונה** One of the 7 angels of

confusion. He is also an angel of annihilation.

HARCHIEL **חארכיאל** In black magic rites, and angel invoked to command the demons that confer the gift of invisibility.

HARHAZIEL (Harhazial) **חארחזיאל** One of the guardian angels of one of the halls or palaces of the 3rd Heaven.

HARIEL (Harael, Behemial) **חאריאל** An angel with dominion over tame beasts. He is invoked against impieties. He rules over science and the arts and is of the order of cherubim.

HARIPH **חאריף** Another name for the angel Raphael.

HARIS **חאריס** Another name for Iblis, chief of the jinn and leader of the fallen angels in Arabic lore.

HARMOZEY (Harmozel, Armogen) **חארמוזי** In gnostic lore, one of the 4 great luminaries that "surround the self-begotten, the savior, or God."

HARSHIEL **חארשיאל** An angel invoked in Syriac conjuring ceremonies. Harshiel is a spellbinding power and is cited (for the binding of sorcerers) along with Michael, Gabriel, Sarphiel, Azrael, and others.

HARTA'IL **חארטל** In Arabic lore, a guardian angel invoked in rites of exorcism.

HARUDHA **חארודה** In Persian mythology, the angel who rules the element of water. In Mandaeen lore, Harudha is equated with the female Haurvatat, who is the spirit of health and vegetation, as well as the ruler of water.

HARUT **חארוט** and **MARUT** **מארוט**; **מ** (Arabic: Romanized: Harut wa-Marut) are two angels mentioned in Quran 2:102, who are described as having been present during the reign of Solomon (Sulayman), and as being located in Babylon. According to some narratives, those two angels were in the time of Idris. The Quran indicates that they were a trial for the people and through them the people were tested with sorcery. The names are probably etymologically related to Haurvatat and Ameretat, two Zoroastrian archangels.

HARVIEL **חאררויאל** In hecaloth lore, an angelic guard stationed at the 2nd heavenly hall.

HASDIEL **חאסדיל** An angel of the planet Venus; also the angel of benevolence, as recorded in a German-type mezuzah. In his duties as angel of benevolence he shares his office with Zadkiel.

HASEHA **חאשה** One of 15 throne angels listed in The Sixth and Seventh Books of Moses.

HASHESYAH **חאשישיה** One of the many names of the angel Metatron.

Hashmal—Hetabor

HASHMAL (Chasmal, Hayyah) **האשמאל** Chief angel of the order of Hashmallim (dominations). According to The Zohar, the term denotes "an inner, supernal sphere, hidden and veiled, in which the mysteries of the celestial letters of the Holy Name are suspended." "Hashmal surrounds the throne of God." He is the 'fire-speaking angel.'

HASHUL **השול** One of the chiefs of the order of hashmallim.

HASMED **חסמד** The angel of annihilation, and one of the five angels of punishment that Moses counted in Heaven.

HASMIYAH **חסמיה** One of the many names of the angel Metatron.

HASMODAI **חסמודאי** A spirit of the moon invoked in talismanic magic.

HASRIEL **האסריאל** An angel's name found inscribed on an oriental charm for warding off evil.

HATACH **חטאר** An angel invoked in medieval Jewish incantation rites. The name derives from the initials of the words of the incantation.

HATIPHAS **חטיפס** Genius of finery, mentioned in Apollonius of Tyana.

HATSPATSIEL **האטספציאל** One of the many names of the angel Metatron.

HAURUS (Haures, Havres, Flauros) **האורוס** One of the 7s spirits that Solomon, according to legend, shut up in a brass vessel and cast into a deep lake (or into the sea). Formerly, as he confided to Solomon, Haurus was a mighty celestial power (but to which order he belonged he did not say). He converses gladly about the creation of the world and the fall of the angels. In Hell, where he is a great duke, he appears in the form of a leopard but, on command of an exorcist, will manifest in human shape. He gives true answers concerning the past and the future. Under his sway, and ready to do his bidding, are 36 legions of the damned.

HAURVATAT ("wholeness") **האורובאט** In Zoroastrianism, one of the 6 amesha spentas (archangels). Haurvatat is female and the personification of salvation. She is also a spirit of the waters. In Mandaeen lore she is known as Harudha, or equated with Harudha, since the latter is male. Some scholars see a derivation from the Koranic fallen angel Harut from this Persian archangel.

HAURVATATI (Haurvatat) **האורובאטי** An angel in Arabic lore derived from the amesha spentas; also called Chordad.

HAVEN **חאון** One of the 12 genii who preside over the 12 hours of the day. Haven is the genius of dignity.

HAVHAVIYAH, HAVIYAHU, HAYAT **חייט** **הוואיהו** of the many names of the angel Metatron.

HAYYEL (Hashmal, Chayyiel, Hayyiel, Johiel, Yayael) **הייל** He has dominion over wild beasts, according to 3 Enoch, but shares the dominion with Thegri (Thuriel), Mtniel, and Jehiel.

HAZIEL ("Vision of God") **חזיאל** A cherub invoked to obtain the pity of God. He is one of 72 angels bearing the mystical name of God Shemhamphorae. When equated with Bernael he is an angel of darkness.

HE'EL ("life of God") **הייל** An angel leader of the "heads of thousands". He'el is ruler of one of the seasons of the year. He is associated with the angel Elimelech.

HEIGLOT **הייגלוט** In transcendental magic, a genius of angel of snowstorms. He is also a ruler of the 1st hour.

HEIKHALI **היכאלי** In hecaloth lore, an angelic guard stationed at the 7th heavenly hall.

HEKALOTH (Hecaloth) **הקלות** An angel in the heavenly Paradise.

HEL **הל** name for God (or an angel of God) invoked in conjuring rites.

HELAYSEPH (Jiluyaseph, Hilujaseph) **הלייסף** An angel governing one of the seasons. He is "head of a thousand" angels of the seasons.

HELEL **הלאל** In Canaanitish mythology, a fallen angel son of Sahar or Sharer, a winged deity. Helel sought to usurp the throne of the chief god and as punishment was cast down into the abyss.

HELELETH (Eleleth) **הללת** In gnostic lore, a great luminary, described as "the great Heleleth descends from before the holy spirit; his aspect is like gold, his vesture like snow".

HELEMMELEK **הלמלק** In Enoch I, an angel governing one of the seasons. The name is said to be an inversion of Milkiel.

HEL(L)ISON **הליסון** One of the 5 angels of the 1st altitude. When invoked he appear holding a banner adorned with a crimson cross crowned with roses.

HEMAH **חמה** An angel of wrath with dominion over the death of domestic animals. He was 500 parangs tall and was "forged out of black and red fire."

HEMAN ("trust") **הימן** Heman is a leader of one of the heavenly choirs. He and the angels under him sing hosannas in the morning hours.

HETABOR **הטאבור** An angel invoked in the exorcism of Wax.

The Tao Te Ching by Lao Tzu



Chapter One

Tao (The Way) that can be spoken of is not the Constant Tao.
 The name that can be named is not a Constant Name.
 Nameless, is the origin of Heaven and Earth;
 The named is the Mother of all things.
 Thus, the constant void enables one to observe the true essence.
 The constant being enables one to see the outward manifestations.
 These two come paired from the same origin.
 But when the essence is manifested,
 It has a different name.
 This same origin is called "The Profound Mystery."
 As profound as the mystery as It can be,
 It is the Gate to the essence of all life.

Chapter Two

As soon as beauty is known by the world as beautiful, it becomes ugly.
 As soon as virtue is being known as something good, it becomes evil. Therefore being and non-being give birth to each other.
 Difficult and easy accomplish each other.
 Long and short form each other.
 High and Low distinguish each other.
 Sound and tone harmonize each other.
 Before and after, follow each other as a sequence.
 Realizing this, the saint performs effortlessly according to the natural Way without personal desire, and practices the wordless teaching through one's deeds.
 The saint inspires the vitality of all lives, without holding back.
 He nurtures all beings with no wish to take possession of.
 He devotes all his energy but has no intention to hold on to the merit.
 When success is achieved, he seeks no recognition.
 Because he does not claim for the credit, hence shall not lose it.

Chapter Three

By not adoring the worthy, people will not fall into dispute.
 By not valuing the hard to get objects, people will not become robbers.
 By not seeing the desires of lust, one's heart will not be confused.
 Therefore the governing of the saint is to empty one's minds, substantiate one's virtue, weaken one's worldly ambition, and strengthen one's essence.
 He lets the people to be innocent of worldly knowledge and desire and keeps the clever ones from making trouble with their wits.
 Acts naturally without desire, then everything will be accomplished in its natural order.

Chapter Four

Tao (The Way) can be infused into the nature and put to use without being exhausted.

It is so deep and subtle like an abyss that is the origin of all things.

It is complete and perfect as a wholeness that can

Round off sharp edges;

Resolve confusion;

Harmonize with the glory;

Act in unity with the lowliness.

Tao is so profound and yet invisible, It exists in everywhere and anywhere.

I do not know whose Son It is. It existed before heaven and earth.

Chapter Five

Nature nurtures all things with the wholeness of complete virtue.

It shows the greatest and perfect kindness by giving life to let all things grow and accomplish them with the hastening of harvest.

Therefore, according to ancient custom, nature may seem unkind to regard all things as being a traditional straw dog for sacrifice.

And likewise with a saint, he may seem unkind to regard people as a traditional straw dog for sacrifice.

The space between heaven and earth is like the bellows, it appears empty yet it gives supply that never fails;

The more it moves, the more it brings forth.

Many words lead to exhaustion.

It is better to center on the true essence within.

Chapter Six

Spirit of the valley is immortal.

It is called the mystic nature.

The gate of the mystic nature is regarded as the root of the universe.

It is everlasting and cannot be consumed.

Chapter Seven

Heaven is everlasting and earth is enduring.

The reason that they are everlasting is because they do not exist for themselves.

Hence, they are long lived.

Thus, although the saint puts himself last, finds himself in the lead.

Although he is not self-concerned, finds himself accomplished.

It is because he is not focused on self-interests and hence can fulfill his true nature.

Chapter Eight

A person of great virtue is like the flowing water.

Water benefits all things and contends not with them.

It puts itself in a place that no one wishes to be and thus is closest to Tao.

A virtuous person is like water which adapts itself to the perfect place.

His mind is like the deep water that is calm and peaceful.

His heart is kind like water that benefits all.

His words are sincere like the constant flow of water.

His governing is natural without desire which is like the softness of water that penetrates through hard rocks.

His work is of talent like the free flow of water.

His movement is of right timings like water that flows smoothly.

A virtuous person never forces his way and hence will not make faults.

Chapter Nine

Those who overly pride wealth is like the overflowing water which shall cause damages. It is better to restrain early.

Those who are not content with fame is like polishing the edge of a knife.

The sharper it gets, the easier it is to break.

Wealth and treasures are but illusions that one cannot possess.

Those who are arrogant of their wealth and fame shall invite blame upon oneself

The nature of Tao teaches one to retreat after one's success and not to hold on to the credit.

Runes for April

By Emily Thornton

April is one of my favorite months. The flowers are growing, there are those random rain storms, and the moody cloudy days. I hope as you go through your April you will ponder the things that you enjoy as the days get longer and brighter. Here are the rune pulls for April.

May 29th through April 4th-Jera (Yair-ah) is symbolic of the Year, Cycle and Progress. This symbolizes the first signs of spring, after a long and bleak winter. If you live in the Northern States, this definitely holds sway. There have been some interesting weather patterns this year. Jera is synonymous with the Earth element. There is a feeling of liberation and opportunity here. It is about this time when Spring Cleaning really kicks into gear for many of us. Outside has been getting warmer and it is time to sow the seeds of our gardens and clean up the lawns that have been lacking. This is the week to start toward some new goals or projects. Jera tells us that when we start, we need to work diligently towards our goal, if we really wish to be successful. This week, get outside and clear off those cobwebs and focus on small attainable goals you wish to achieve.

April 5th through April 11th- Raidho (Rye-tho) symbolizes Travel, Journey, and Decisions. With the weather getting better, there may be a real drive to travel or go on adventures. This week plan a trip, whether big or small, close or far, just plan on getting out of the stale insides. Raidho wants us to not only act on the travel, but the path to do so. On a spiritual level, Raidho speaks to where we are on our own journey. Are we on a path that is beneficial to us? We control the journey. Decide this week whether you are being controlled by your path or are you doing the controlling. Don't forget to work on doing a little traveling (local walking paths are a fantastic start).

April 12th through April 18th-Othala symbolizes Home, Family, and Ancestors. If you have been feeling a need to reconnect to your past or family...now would be the time to do so. Othala looks at the systems that we have grown up with and how they deal with our values. This is the time to either cut out the old belief systems that are no longer serving you, or to reconnect to your ancestors. Both can be freeing and help you make peace with your past and the traumas that may be there. This week, look at where you hold your basic beliefs. Are they still relevant to where you are today? Challenging the learned belief systems that one has can be jarring, but overall cleansing because of the after effects. Just like with shadow work, it is good to see what our base prejudices or values are and see if they still hold sway. If you are struggling this week with the home and ancestors...it may be time to reconnect with people who support and know you (or therapist) who can help you understand what steps you can take to change it.

April 19th through April 25th-Nauthiz (Now-theez) symbolizes Needs, Sacrifices or Scarcity. Courage and change are needed at this time. Nauthiz is the rune that speaks to the difficulties of hunger, illness, or poverty. It can also include fear or vulnerability. This week, look at where your vulnerabilities lie. Are you living paycheck to paycheck, a car breakdown away from poverty? These tough questions are needed to be asked to help one understand where their priorities lie. This week focus on your needs. Are they being taken care of? Have you been planning for future needs? How do you handle obstacles that arise? This week may be difficult as well, but it will help one understand where our needs or wants are based. When this occurs with friends or family, I usually recommend starting small to build up their own stockpile in case another lean week occurs. An extra can of food, bag of beans, rice or pantry staples can be bought during grocery runs. Learn to use them and the courage will begin to grow in the face of scarcity.

April 26th through May 2nd- Mannaz (Man-ahz) is symbolic of Humanity, Community, and Intelligence. This week is the closing of one month and the beginning of another. This week, reach out to your community. The past two weeks have been tough, it is time to get back to the friendships that have been neglected. Mannaz also helps harness our creative side. Is there a project that you have been contemplating with a friend or someone close to you? Working together with someone to reach a common goal will help rekindle that feeling of community. At heart we are all social creatures, sometimes we need that boost of warm and bright weather to help us get back into the community. This week, look at the friends and community you have, are there any lacking aspects? Are there friends or relationships that need rekindled?

April is the time of growth and reinvigoration. The runes of this month are almost mirror images of each other. We will be looking at the spiritual side of ourselves, as well as our public persona. While the weather is nice, get out into the world and enjoy the growing plants.

Fàs Gu Sìolmhor! (grow in abundance)

Black Moon Lilith – April 2026

By Lisa Hoffman

April marks an important turning point in the Black Moon Lilith cycle through Sagittarius. The emotional discoveries of recent weeks start to settle into the body, and our focus gradually shifts from exploration toward embodiment and personal sovereignty. Rather than searching outward for meaning, this month invites you to feel what has already been revealed within and allow it to integrate.

Black Moon Lilith in Sagittarius 11°, April 1–6

Sabian Symbol: “In the left section of an archaic temple, a lamp burns in a container shaped like a human body.”

This symbol reminds us that the body is a sacred vessel. The image of a lamp burning inside a human-shaped container represents the light of consciousness living within physical form. Spirit does not exist somewhere separate from the body. It expresses itself through it.

During this phase, you may feel called back to practices that reconnect you with your inner awareness. Meditation, stillness, breathwork, or time spent in nature help restore the natural flow of energy between body and consciousness. Shadows may appear as distraction, resistance, emotional fatigue, or a sense of disconnection from oneself.

Black Moon Lilith in Sagittarius 12°, April 7–15

Sabian Symbol: “A flag that turns into an eagle that crows.”

This symbol and degree represents a shift from external identity toward personal vision. A flag symbolises collective beliefs and cultural identities, while an eagle represents perspective, freedom, and higher awareness.

During this time you may begin noticing how strong cultural expectations have influenced your personal goals. Ambitions we have pursued our whole life have been shaped by society values but it is time to what truly aligns with our inner nature. This realisation does not require rejecting society or abandoning ambition but increasing inner awareness. Shadows may arise as triggers that stir when your eyes are opened to this truth.

Black Moon Lilith in Sagittarius 13°, April 16–24

Sabian Symbol: “A widow’s past is brought to light.”

This time speaks of revelation and emotional honesty. Parts of the past which were hidden, forgotten, or misunderstood can now come forward to be integrated into present awareness. Shadows will be held in old emotional patterns, buried memories, or long-held beliefs may become visible. There may be grief and while this can feel uncomfortable, it also creates the possibility for liberation.

Acknowledging what has shaped you without allowing it to de-

fine you is about understanding yourself. When understanding deepens, your emotional weight begins to lift and a clearer sense of self can emerge.

Black Moon Lilith in Sagittarius 14°, April 25–30

Sabian Symbol: “The pyramids and the sphinx.”

After all the inner work of this month, we arrive at the image of the pyramids and the sphinx, symbols of enduring wisdom and ancient knowledge. Just as your emotional understanding deepens and brings a clearer sense of self, the passage of time and experience reveals a more universal awareness of who you are becoming. With this depth can also come shadows around stopping, resting, or allowing integration after so much inner movement.

As April draws to a close, it is important to acknowledge how many insights have surfaced and how much work has gone into embodying them. Now the invitation is to rest in that wisdom, much like the still presence of the pyramids and the sphinx themselves. This moment acts as a bridge in the larger Black Moon Lilith journey through Sagittarius. The awakenings of this month prepare you quietly for the next stage of growth.

Continue the Journey

If you would like to explore Black Moon Lilith more deeply, I share regular insights and energetic updates through my email community. Each cycle we explore Lilith’s movement through the zodiac and the shadow work themes that arise, along with practical ways to work with the energy in everyday life.

Subscribers also receive invitations to my Shadow Work Study Group, where we gather to reflect on these cycles, practice embodiment tools, and support one another through the deeper transformation Lilith invites.

Join the email list to learn more: <https://lisahoffman.au/so-609913>



ASK SEBASTIAN



Sebastian is here to answer any questions commonly asked about the craft and its practices. Too often these basic questions are asked but overlooked. Many people seek answers through books and whatever the internet can provide them. However, they find more confusion than they wish. So many questions and discussions found throughout both the books and the internet are filled with a lot of misinformation. Rather than overwhelm you with a mass amount of dribble, Sebastian will give you basic insights which are generalized. Draw your own conclusions and expand on the research if you must.

Here are some basic questions asked by those seeking out the craft:

1. **What does "Pagan" actually mean?** *Pagan originally comes from the term pagani or paganus meaning "earth dweller" it was a derogatory term used by the Romans to describe the country dwellers. It is now used as a term to define any belief not of the major 9 religions.*
2. **How is Paganism different from Wicca?** *Wicca is a structured form of pagan practices which was developed in the 1950's. Paganism is a broad term and incorporates several other forms of spirituality including that of just the general practice of witchcraft.*
3. **What does "Witch" mean in a modern spiritual context?** *In the modern context a witch is a person who practices Witchcraft. Defined basically as a person who bends energy through the use of their will.*
4. **Can I be Pagan without being a witch?** *As a matter of fact yes you can. Being a Pagan means basically practicing an earth based or nature based form of spirituality..*
5. **What do witches actually believe?** *Witches believe that the earth is sacred and that we are the caretaker's of the earth and nature. We believe in the power of the will and the ability to manifest our will.*
6. **Do I need a coven, or can I practice alone?** *It is perfectly okay for anyone to practice the craft as a solitary. The idea of having a coven is basically the ability to associate oneself with likeminded individuals to enhance ones magickal workings.*
7. **Are there rules or commandments in Paganism?** *No, paganism has no set rules. It however, defines it's system of values based on the moral codes of the society in which one lives.*
8. **What is the Wheel of the Year?** *Traditionally it is a record of the turn of the seasons and a visual representation of the 8 Sabbats or seasonal holidays. However it also, in turn, defines the natural cycle of life, death, and rebirth as experienced by all of nature's beings.*
9. **What are the elements and why are they important?** *The elements are commonly represented by Earth, Air, Fire, Water, and Spirit. Each of them have a great importance as they teach us lessons which are valuable to our spiritual evolution. They teach us when to be silent, to know, to will, and to dare. Aspects which lead to the evolution of the spirit.*
10. **What is a Book of Shadows, and how do I start one?** *A Book of Shadows is a written record of ones learnings and rituals as one progresses in the craft and its practices. It is individual to the person and you start it simply by recording what you are learning as you learn it. You will find that you will have several different books as you progress.*
11. **What is Magick, and how is it different from Magic tricks?** *Magick is the physical manifestation and manipulation of energy in accordance to ones will. It is differentiated from Magic in the fact that Magic is merely the creation of illusion to trick the mind.*
12. **Does Magick require belief to work?** *Magick is all around you tapping into it requires intent and belief.*
13. **How do I cast my first circle?** *The answer to this question is a long one, and will be addressed in this issue as for some of the procedures used. However, these procedures will vary as traditions vary as well.*

Circles and Castings

Most ritual workings are done in a special space marked off as a Sacred Circle that is cast in a special way. There are many types of circles and different ways to cast them. The Sacred Circle is a place that "feels" right for each and every person. It is always best to cleanse the area before performing any magick in this area. I recommend using sage to smudge the area while asking your chosen deity to enter the area and keep it free from evil and negative energy.

The most typical way to set up the circle is to place your altar on the east side of the circle. If you aren't sure which way is east, you can use a common compass to find it.

Note that it is best to know what you are going to do before casting a circle. This will make things go a lot smoother when you get the circle cast.

Types of Circles

Ok... now I am going to try to give you a sample list of things you can use, and how to use them, to make the circle with.

Stone Circle - One of my personal favorites, you can use any number of stones you wish, but I have found 13 to work quite well for me. You line them up in a circle around you. As you place each one, bless it by asking it to help keep you and any others in your circle safe from evil, negative energy, and harm. This is a fairly simple circle to place and the stones can be left in place for future workings.

Candle Circle - This is one that you can use when you are running short on time, or you can't get outside to do a circle that way. All you have to do is use your quarter candles, which I will explain later in detail, set up at the four cardinal points (directions).

This can be done anywhere there is not a lot of wind to blow out the candles. Again, you will be asking the directions and their corresponding elements to watch over your workings.

Salt or Flour Circle - Most people prefer to use salt (specifically Sea Salt) but in a pinch, flour will work. To cast this circle, you cleanse the area and then you take salt and pour it in a circle around the area you are going to use for your work. You can, as you do this ask the elements to guide you and watch over your workings. When I use this one, I prefer to physically "open" the circle by using my foot to push the salt in one area out of the circle pattern.

Ring of Trees - Ok, so this one may not be easy to attain, but it is a really easy and powerful one. All you have to do is a simple cleansing, to reinforce the positive energy. Then you walk in, ask the elements to guide you and move on with your work.

If any one else has any chosen methods, please let me know and I will be happy to add them to this page. I will discuss the specifics of casting and closing circles later.

Tools of the Circle

Earlier, I briefly mentioned an altar. This is simply something that you chose to use like a table for the things you will need to work your spell or ritual. You should always have something to represent each of the four elements.

Altar Candles - These are generally three candles placed on the altar: a white Goddess candle, a red God candle and an altar candle representative of the ritual or rite being performed.

Altar Cloth - The altar cloth is usually draped over the top and front of the altar. The altar cloth is not to be used for any other purpose, it should be folded and put away when not in use.

Athame - The athame is generally a double - edged, dark - handled knife with a blade of about five to six inches in length. This is a tool used in many rites and rituals, and is not usually considered to be a weapon. It can be used to carve words and symbols into candles for use in candle magick. It can represent two things, air and the God.

Besom - The Besom is a sacred broom used to sweep away any lingering energies around the area in which a circle is to be cast.

Boline - The Boline, or herb - harvesting knife, is a small and very sharp, white - handled knife with a curved blade, resembling a small sickle. It is used to cut herbs and for nothing else.

Cauldron - A cauldron can have many uses, from holding a small balefire on Beltane to functioning as the female counterpart to the male athame in a symbolic ritual. It can also be used to represent water.

Chalice - The chalice is a glass or metal drinking goblet and can be used in place of the cauldron for some rites and rituals.

Incense and Holder - The burning of incense represents the elements of both air and fire in the circle.

Pentagram Symbol - The pentagram symbol is a basic symbol of witchcraft. It is the focal point for spell work and is generally placed on or right in front of the altar. The five points of the pentagram represent the elements of spirit, earth, air, fire, and water.

Purifying Sage - Sage gives off a considerable amount of grey - white smoke that is a purification agent used to remove any negative or other unwanted energies from the area in which a circle is to be cast. Sage should be used the first time a circle is cast in a new area and anytime thereafter when the participants feel it is necessary.

Quarter Candles - There are four quarters used in casting a circle, sometimes called Guardians or Watch Towers, which each represented by an individually colored candle. This I gave you earlier.

Salt Container - Salt is one of the purification agents used in casting an circle and is usually held in either a glass dish or a seashell.

Sword and Wand - These are optional items. The athame works just as well in place of one or both.

Water Container - Water is another of the circle purification agents. The water container should be any vessel capable of holding water without spilling and of sufficient size to allow you to add three pinches of salt and stir with your athame.

Book of Shadows - This is simply your spell book. This way, you can use it to look at the spell or ritual when you need to. Sometimes it is easier to have some kind of reference to go by then to try to do it all from memory.

Ok, you have your circle and your tools and you know what you want to do with them. Now we will work on actually **casting the circle**.

First, you will need to cleanse the area with your sage. Next, you will set up your altar the way you feel it should look. (I use the directions to place each tool, it looks and feels good to me.) Now, place your quarter candles in the proper places and starting in the east, going clockwise, light each one as you call them, like the sample earlier. Next you will invoke the God and Goddess while lighting their candles. I will post a sample invocation later. Now you can do your work, rite, or ritual.

I will be telling you how to close the circle soon, this way I am not "locking" you in.... hehe.

Invocation of the Goddess

This is just a sample, as will the Invocation of the God. You can change them to suit you.

Dear Lady of the night, we open our arms, minds and hearts to You. All power is Yours as we ask You to join with us. Send us Your love, Your guidance, and Your blessing. Be with us Lady, Welcome and Blessed Be.

Invocation of the God

Dear Lord and consort of our Lady, we open our arms, minds and hearts to You. All power is Yours as we ask You to join with us. Send us Your love, Your guidance, and Your blessing. Be with us, Lord, Welcome and Blessed Be.

Calling The Quarters

So, you have your circle type decided on, good. Now we will learn how to call the quarters.

First, we will start in the East, though I am different and start in the North. You will find what is right for you. I will tell you the traditional method, then you can take that and do what feels and works best for you. You can use your hands or you can also use your athame to call the quarters. A sample invoking of the Quarters will be at the end of this section. You can use what ever you are comfortable with. Remember, nothing is set in stone and it is always what feels right for you, not what is right for someone else.

East - This direction corresponds with the element of air. Your color candle is traditionally yellow for this quarter.

South - This direction corresponds with the element of fire. This make the candle color traditionally red.

West - This direction corresponds with the element of water. This makes your candle for this direction blue.

North - This direction corresponds with the element of earth. The color of your candle for this direction will be green.

Sample evoking of the Quarters:

Spirit of the East, Ancient One of the Air, I ask you to join with us (me). Be with us (me) and guard us (me) in our (my) circle. Blessed Be, Spirit.

Move Clockwise to the remaining directions of the compass and at each, recite the same evocation, changing the direction and element.

Closing the Circle

Thank the deities for Their help and bid them goodbye. You will then release the quarters. Examples of both are to follow. After you release the quarters, you will take your athame, walk the circle counter clockwise, starting and ending in the east. Then kneel in the center and say:

The circle is open but never broken. Nothing but love has come here and nothing but love has left here, so mote it be. Merry meet and merry part until we merry meet again. Blessed Be.

Releasing the Quarters: This is just a sample, you can always modify.

Spirit of the East, Ancient One of the Air, I thank you for your presence here tonight and for protecting uus in our circle, Go in power, Spirit. Hail and Farewell. Blessed Be.

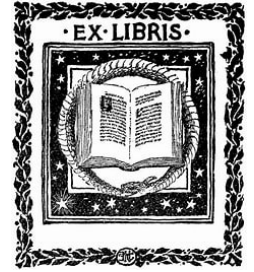
Bidding the God and Goddess Good Bye: Again, a sample, feel free to make it yours.

Dear Lord and Lady, We thank you for your presence, for Your guidance, for Your light and love, for night and change. We ask for Your blessing as You depart. Hail and Farewell, Lord and Lady. Go in power, Blessed Be.

I hope these guide lines help each and every one of you in your quest for knowledge and your spiritual journey. May the Mother and Father Bless and Keep you . Merry Meet and Merry Part until we Merry Meet again.

EX LIBRIS

The Pagan Library



Magickal Correspondences



by Rev. Edward Sott

Press Release:
Exploring the Language of Energy: New Guide to Magickal Correspondences Empowers Modern Practitioners

A Practical and accessible resource for understanding the symbolic connections that shape magickal work.

A new educational feature from the CEO of Today's Witch Magazine, *Magickal Correspondences*, offers readers an insightful and accessible look into one of the most essential foundations of magickal practice: the art of symbolic connection.

Rooted in the idea that magick is a natural process—not supernatural—this book explores how practitioners work with subtle energies, intention, and visualization to create meaningful change. Drawing on both traditional and modern perspectives, it presents Magick as “the process of rousing energy, giving it purpose, and releasing it to manifest results. (todayswitch.net)

At the heart of the book is the concept of correspondences—a symbolic language that connects elements such as planets, days of the week, emotions, and natural forces. These associations allow practitioners to align their intentions with specific energies, enhancing the effectiveness of rituals, spellwork, and personal spiritual practice.

The book also introduces readers to practical applications, including:

- Planetary and daily correspondences for timing rituals
- The role of intention and visualization in directing energy
- How natural elements and symbolism work together in magickal systems

By framing magick as both an art and a disciplined practice, the book bridges the gap between curiosity and understanding, making it an ideal starting point for beginners while still offering depth for experienced practitioners.

This reflects this author's ongoing commitment to education, accessibility, and the thoughtful exploration of spiritual traditions in a modern context.

About Today's Witch

Today's Witch is an in print and digital publication dedicated to exploring contemporary witchcraft, pagan traditions, and spiritual practices through education, storytelling, and community-focused content. Providing the community and non-practicing communities a comprehensive understanding of the Pagan faiths and traditions. It is the only Monthly Pagan Magazine in Print in the world.

ABOUT THE AUTHOR



Reverend Edward Sott is a Second Generation Alexandrian Wiccan High Priest and Elder of the Pagan community. He has been practicing the craft for 50 yrs and he is a Theologian, Historian and Elder. He currently resides in Pennsylvania and has traveled immensely in the course of his life. His studies are continuous and he is forever striving to add more knowledge to his constantly growing database of information.

He is the founder of The Pagan's Rights Coalition/United Pagan Charities Co-op a non-profit which was first developed in 1992 with Dr. Jeanne Re Montandon and himself. He also is the founder and CEO of Covered Bridge Press and Today's Witch Magazine currently the only monthly pagan magazine in print in the world.

Magickal Correspondences Interview

Mel: Welcome back to another interview with Covered Bridge Press, Today's Witch Magazine. Today we're gonna be talking to Edward Sott, the author of the newest book, Magickal Correspondences. Welcome Edward. Glad to have you today.

ED: Thanks Mel, for having me and looking forward to talking about the book.

Mel: We've interviewed you before, however, could you give us a small cliff note version of a little bit about your background, who you are and what you do?

ED: Okay. I'm an Alexandrian Wiccan High Priest of Second Generation Alexandrian. I have been practicing craft since I was eight years old. I'm 58.

Mel: Wow.

ED: 50 years in the craft as a practitioner and I am the CEO and Director of Operations for both the Pagans Rights Coalition and Today's Witch magazine and owner of Covered Bridge Press, LLC.

Mel: That's quite the resume there, Ed, and quite the resume. So like I said, we've interviewed you once before and thank you for that CliffNotes version.

We appreciate you and we've already talked about how long you've been serving the Pagan community, which is just amazing in and of itself. But could you give us a little bit of an idea of what motivated you to write this book, Magickal Correspondences, especially at this point in your personal journey.

ED: Okay. Magical correspondences started off with an idea because when I had written a ritual workbook, I put some of my correspondence tables in there that I had gathered over the course of my learning. I put the correspondence tables in that book, but then I'm thinking to myself, how many more correspondence tables do I have in my online book of shadows?

I went onto that website and I started gathering all the intel I had. I discovered I had 219 plus correspondence tables just sitting there waiting for it to be given out. Now, magical correspondences are very important in the craft. . They teach us where, what, they give us guides to what we need to make to best implement our magical workings at the best possible times.

The correspondence are super important, and that's why I decided it's important to make a book like this.

Mel: I totally agree with you. And would you agree that given all the information that's out there on the internet. A lot of these folks that go out there and self proclaim things as the be all, end, all of witches, would you agree that you felt like?

Today's new aspiring witches really needed something that was accurate, something that was well researched, and something that could support their spiritual path without having them question themselves about what they found on the internet.

ED: Oh, I totally agree. That's a major problem we have with this new bubblegum technology, and Google.

The Google witches and bubblegum witches and TikTok witches, right, are giving false information. They're not given well researched, historically accurate information based upon years of study and research. They're given their spoonfed whatever garbage they can be given, and then they turn around and they accept it as this is the god honest truth.

Mel: Just because you find it on the internet doesn't make it true.

ED: And the thing about it is, what my research has come from, first of all, 50 years of craft pro practice and study. 50 years of being a theologian and historian. Study of every world religion known to man.

Mel: You, you are very well versed, Ed. I have to admit, I've known you for a little bit now and you're very well versed in a lot of different pantheon traditions and all the things that go in, I think, to creating a personal magical path. Could you speak a little bit about why correspondences are so important to a person's personal path and their magical work?

ED: How about I cite an example,

Mel: please?

ED: Okay, I'm gonna pull up Monday's Correspondence Table because daily correspondences are just as important as monthly, yearly, quarterly, annually, semi-annual, whatever you're doing. And people ignore the days of the week, but have you noticed that you magically say things for the days of the week all the time?

Oh my God, it's Monday, or it feels like a Monday.

Thank God it's Friday or Hump days here.

Those are correspondences, quite literally, that is using a magical intent during those days and recognizing the power of those particular days. These correspondence tables will help you gain that same recognition because they help you gain the recognition and knowledge of, what you're gonna do, what you can do on these days, and what benefit and what benefits can be netted from them.

Mel: Very important I think, especially to not just new people that are new to finding the craft, but also people that kind of want to hone and deepen their craft.

ED: Okay. Today is Thursday, right? So let's look at Thursday's correspondence table.

Mel: Jupiter.

ED: It's Jupiter. Yes, definitely a Jupiter planet. The planet is Jupiter in the correspondence table for Thursday. Now Jupiter's planet is a planet of extreme expansion. Moving ahead. It also covers legal matters, money, luck, religion, because it's it. Sagittarius is one of its key signifiers. And is the sign is the house and sign of religion with Jupiter that's rolling the planet?

It's definitely masculine and gender. Thursday falls into masculine gender. The elements are fire because it is named Thursday because it's Thor's day, right?

It's named after the Norse God Thor.

Mel: Hail Thor.

ED: And you have things like the perfumes they're used for as a stock lilac store. They're all odors, masculine, musky odors. The incense is pine wood, the color is purple, indigo and blue. Purple, indigo and blue are the spirituality colors.

Mel: Agreed.

ED: Thursday is ruled by Sagittarian and Pisces. The crystals are Sapphire, Lapis Lazuli, which is a very powerful stone when it comes to religion, spirituality, and also luck and legal matters and the magician stone. Okay. Herbs of Basil, Cinnamon and Bay. Now, that mixture alone is a very powerful, potent protection mixture and is used in a lot of metaphysical shops.

Mel: Agreed.

ED: Okay. You have gods and Gods of student, or Joe Jupiter, Vishnu Bra Potty.

So you can have a God from multiple different pantheons that show up. I have the Angel Quiel, who is a ruling angel of Jupiter, the planet Jupiter.

The tarot, the emperor, is the card for the end. Excuse me. Energy, aspiration, benevolence, charity, confidence, dignity, expansion, extra faithfulness, generosity, growth, gulability, humanity, indulgence, kindness, merciful, optimism, orthodoxy. Philanthropy, poise, pompous, radiance, religious reverence, and understanding. All of these, all those keywords of energy or things you can work towards on the day of Thursday, for example.

Mel: Yeah, Jupiter, the great benefactor.

ED: What's happening?

Mel: I said Jupiter is the great benefactor.

ED: Oh, gotcha.

Mel: So based on this little taste of what you've given us about this day of the week we realize that your book covers a large range of topics as far as correspondences go. Could you speak to us a little bit about why you included what you included in these correspondences in these tables?

Were you just trying to cover everything there was or were there things that were more important than others that really spoke to you, that you felt were really important to be included in this book?

ED: With the correspondence tables, it was a case of when I built them, I was cross-referencing everything. For example, when I did the Thursday one. In any other book. You're not gonna find a daily correspondence table. Because you don't consider the days of the week.

But anyway, with Jupiter, for example, I looked up Jupiter and I went to all Jupiter's correspondences to see what I had available for that. I went to the next one, which was the tables of correspondences to energy types. And working and correlating all this information together as much as possible to try to make it concise.

Mel: And too saturated, it sounds like giving people as many possible correspondences as you could.

So when you look at this book that you've created, do you look at this book as more of a reference tool? Do you look at it as a teaching guide or maybe like a bridge between both of those things?

ED: Actually, I look at it as a bridge between both teachings.

Mel: I had a feeling.

ED: What if you use this book in correlation, say with the ritual workbook. You have the most powerful form of rituals you could possibly imagine because you have all the information you need to make a ritual happen.

You have all the material you can gather, but, and even counter materials. If you don't have some, you have other listings.

That you can make some of the most powerful rituals combining those two books. And that was my goal, is make a book that can be used as a reference tool for all, for any other workbook that you have for your gir.

Mel: Wouldn't you agree? It's been my experience anyway with folks that come into our shop.

It's like sometimes people come in, especially if they're new and they think that they can only have this one thing to work with in this one ritual. And I think having multiple choices to choose from as far as correspondence goes, I think it helps people get out of that. I must live in a box and I must do A, B, and C Exactly like this.

The craft is so personal and it grows so much. And would you agree that having multiple options for correspondences is especially helpful, especially for folks that are new?

ED: Oh, definitely. See, here's the thing, I remind all witches, everything we do. It is done with intent and the intent, it comes from us. We are the only tool we really need.

Mel: That's true.

ED: The rest of the tools that are out there, including these correspondences, these listings of correspondences are there to help guide our intentions. They're to aid us with a visual representation of what our intentions are. This is a key as well, we all use symbolism. If I mention the word two golden arches, what's the first thing that comes to mind?

Mel: McDonald's.

ED: Exactly. Now all of a sudden you start salivating a little bit, you start tasting french fries because they're the best fries, of course. Okay. Yeah. That's the power of a symbol.

Mel: No, I totally understand that. Could you speak a little bit about how people can sometimes find and create their own correspondences, like things that resonate with them?

ED: Oh, definitely. You'll find that with your tools and any tool you gather that you can, you'll apply your own energy to that tool. Therefore, that tool becomes a specific correspondence to what you're working on.

What I offer in the book is further correspondence. So you have a guide point to where if you're not sure what tool you need to use to gain that, that subconscious awareness and bring it into the conscious, bring it into consciousness that some sort of guideline of these are tools that are being used throughout centuries and millennia.

To, bring upon these certain aspects. For example, woad, the blue, which is a plant that brings blue, particularly blue tint. It was used by the north, used by the Picts and used by the Danes.

As a very powerful way of drawing to them energy for, from vest fuel, energies, particularly used by the berserkers. When they are trancing to become, the animal and get the power of the animal that they're trancing into.

And it's shamanic. And the, shes would do that with red, the color of blood, including blood sacrifice and everything. So that's a human, that's a spirit and soul carries the spirit and soul of every thing according to most traditions.

So that association with blood and red for that particular

Mel: makes total sense. Yeah.

ED: Just many examples of why you want a correspondence table so you can make those correlations.

Mel: And record your experiences, hence the ritual workbook. Yeah, so important. In your own experience, do you have any personal correspondences that you particularly really either enjoy working with or have seen to be very effective?

Anything personal to you that has worked well for you?

ED: Because I am a full believer in the power of the witch itself. Okay. I am my own correspondent.

Mel: Of course,

ED: I work my magic when needed. I never use magic for mundane reasons. Mundane purposes require mundane solutions.

And so when I'm working powerful magics for other purposes, what I would do is I will go to my own correspondence tables and look into them. The guide. They become a guide to me just as much as anybody else. So having a personal correspondence, I would say probably no, except for knowledge and awareness that I am truly the one mastering the power.

That is, the rest of my tools are there to assist me in bringing the subconscious awareness into play.

Mel: Are there any ingredients in the form of magical correspondences that you're particularly fond of? Stones, herbs, oils, candles, anything like that?

ED: They're ingredients like in a recipe. Imagine the final result is what you do, correct?

Mel: Correct. So how would you feel about that? I'm trying to think of a good way to ask this. It's a little bit difficult to ask, not you, but difficult to word, but when you work with correspondences how do you feel your intuition? How do you feel that intuition plays a part in that?

ED: Intuition plays a heavy part in it. Okay. I've always said when working magic, rely on your gut. Rely on what you are. Your seven senses, actually eight different clear senses. Because there are eight clear senses that exist. I recently did an article on the clair senses.

Mel: You did.

ED: And each of the clair senses, if you rely on them, are built into your intuition. They are built naturally into your instinct and intuition. Rely on your instinct and intuition is very important. When you pick up that stone, a stone that someone said is for grounding, right?

Just as hematite, which is a known grounding stone, for example.

You might get a totally different energy from that stone than the grounding energy because it's also an energy of protection. It's also has the energy of reenergizing your chakras. Because it works with the crown chakra.

Hematite has more than one power, so rely on your intuitive sense to understand what that tour object is trying to bring to you.

Mel: Kind, like along the same lines that hematites are very good for grounding and if someone were to pick up a piece of hematite, it feels very heavy. It's high in iron, it helps you just feel like you're more grounded to the earth. Along those lines too, wouldn't you agree?

ED: Yeah.

Mel: So who do you feel that correspondences help? Practitioners, witches, whatever word you wanna insert here. How do you feel that it helps them align themselves maybe a little better with, let's say, natural forces elements, the universe?

ED: In the aspect of that, I can say it aligns you with the cultural awareness. Because a lot of these correspondences have been practiced through cultures, through centuries, like I said, through millennia.

As witches, we have a tendency to propagate our practices based upon the previous cultures and cultures that we relate to and we associate with. So being aware of what these cultures are you have used in the past for correspond in their correspondences. Thus, for example, angels, which is one of the things I put the correspondence with.

Because it's used by the OTO. They use some Christian magic. And angels altar associated with Islam. They're associated with the-ism, they're associated with seers because Solomon was not a Solomon was a witch, a Soer.

Mel: A lot of Western magic uses that.

ED: He was a magic user. And he would summon many archangels and angels to his bidding. Do with what culturally feels right to you.

Understanding, and using symbols of those cultures, combining them with the magical correspondences that exist in modern times.

Like I said, you're working some, you can work some very powerful, magical results from that.

Mel: Definitely. So if you were to give some advice to beginners, what advice would you give to them to avoid feeling overwhelmed about needing to add on every single correspondence they find?

ED: You don't have to use every correspondence. The point of issue is that even one of those items that I gave, for example, in the Thursday correspondence is used. You have your representation of Thursday, for example.

Even working today, working on Thursday to bring this particular thing, so you want justice for the legal matter.

You, you have a lawsuit coming up and you want justice for it.

When's the best time I can work magic... Thursday. Then you can go look into the planetary hours. So look into the table with planetary hours. You can look into the table with the influences of which planets are doing what on what particular time.

You can look into the correspondence for the gods and goddesses, so you can ensure the proper work. That's why the correspondence tables are so important. You can do it in bits and pieces. You don't have to do the whole thing, just bit and piece it piecemeal. It's a buffet. It's a magical buffet. That's a good way of putting it.

Mel: So if someone were to take just one insight from your book, *Magickal Correspondences*, what would you hope that they would take from it?

ED: I would say that their ability to work their magics and net the results and manifest their will would be increased immensely. That's what I hope for, that by using these correspondence tables and using the book *Magickal Correspondences*,

You will find yourself able to work your magics in a more efficient and more productive manner than you ever thought possible before.

Mel: I love that. I love that. So for those of you that don't know you as well as I know you ed is always working on more projects can you tell us what you're working on for your future books right now?

ED: Say again?

Mel: I said could you tell us what future books you're working on right now? What topics? Give us a little tease.

ED: Oh, and that's a future book coming out soon? Yes, there is. It is called, the Future Book is called. What did I call it? Oh, I saw the signs.

Mel: Could you tell us a little bit about that?

ED: I saw the signs. It is going to be a book on world astrology.

I love it. Something that is not covered in any astrology books, mostly western astrology books you will find by a dime a dozen.

And as a bookstore owner, you know that you do see hundreds of books on western astrology.

My book is gonna be covering the history of astrology, dating, all the way back to Babylonian times.

Mel: Oh, that'll be good.

ED: And I even have astrology in there that's from Asia. Like the Burmese astrology system. The Aztec astrology system. Babylonian Astrology systems. Judaic astrology systems. Believe it or not, the Jews actually had an astrology system,

Mel: I believe it.

ED: Egyptian astrology. Celtic astrology, you name it, it's in there.

Mel: Nice.

ED: Like my tarot book. This is not your mama's astrology.

Mel: I think you're gonna start doing maybe a, this isn't your mama's ellipse, and then whatever topic it is.

ED: What's that?

Mel: I can see you starting a series and calling it, this isn't your mama's, and then dot, and then whatever you're working on.

Finally, and in closing, could you tell people where they can find out more about your work with Covered Bridge Press in Today's Witch magazine?

ED: Oh, yes, Todayswitch.net and basically the pay covers everything we currently put into publication. We have three years of today's Witch magazine out. Right now we're in our third year...

Mel: which are totally collectible and withstand the test of time.

ED: Oh. It's an extremely collectible magazine.

Mel: Very good to hold for reference material.

ED: We're, we have nine minutes left by the way. Okay. But yeah, extremely collectible. Keep it because it is a key. Put it on your shelf magazine because it's, it is a minimum of 50 pages

Mel: and it's grown since then.

ED: We go all the way up to 80 pages right now. So it's quite an extensive collectible, an extensive magazine loaded with information. Our books are always gonna be published by, and we're an independent press, so we publish our books at prices that you can't find anywhere else.

Mel: Yes.

ED: I'm always looking for authors, always looking for writers. We offer the most affordable services and some of the most valuable services you could ever find for a publishing company

Mel: at excellent prices. I might add

ED: At the most extraordinary prices you'll ever get because we have to write a book that's a hundred pages or more from to, to get it published by Covered Bridge Press, it costs you \$650.

A flat thing. And it's independently published, which means you're not locked into a genre. You're not locked into a specific genre or anything else.

You can do any genre you want without publishing company except for porn and hate,

Mel: right?

ED: Porn, erotica, hate...We don't do. But anything else.

Mel: I think are important.

ED: Everything else we do,

Mel: yeah.

ED: And we don't lock you in. You can cross a genre many times over. In fact, there all my books say, as you can say, you can attest to are multiple genre books.

Mel: Ed, I wanna thank you for joining us for our interview today. It was wonderful to hear about your book, Magickal Correspondences, and we look forward to when our order comes in at the shop. I, we've already sold out of it, but I'm looking forward to getting more copies in. So thank you so much.

ED: Oh, They'll be on the way Monday.

Mel: Thank you so much, Ed.

ED: Thank you very much for having me. Have a blessed a day.

Mel: Blessed. Be

ED: Blessed Be.

A Bard's Corner

Each Woman A Sister **by Olivia Pockett**

How else can I explain this position—
unfurled from covers,
now wrung out at the stomach,
pain in each pull for air.

I'm sorry. I'm so sorry. I'm sorry, I'm sorry, I'm sorry. I'm so sorry
that they did that to you. I'm sorry.

To have a chest so wide
fallen heads
of mothers we've lost
could now sleep—
a cradle in the courtroom.

Which ones are left
to fend the devils,
eyes alone,
freshly ripped open between our legs?

Heavy face.
Wetted cheeks.
Veined thighs.
Stinging eyes.

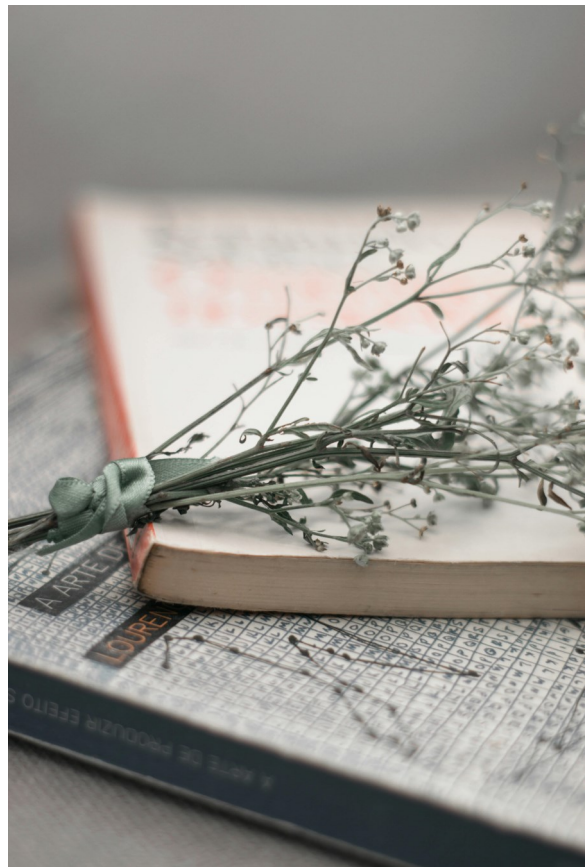
Each woman, a sister.

A plea caught through wires—
not lost now.
It cannot.
It cannot happen again.

I mourn for those
I have never met—
the Witches who were mothers
lost all to the fog.

Written by Ric

I look out, look out to sea
I feel the calm
But the moment passes
Because I see the waves
Waves closing in on me
In on me in every direction
Can I handle another crash or even another break
The ebbs and flows
Washing all over me, I try to steady
Longing for a port
A place to stay, to root, just to float
I wish for a dock, just to sway in the bay, not to get to deep
Too deep like today
Able to reach below, feel a solid ground under me
But when I do all I feel is the sway back and forth.



Allowing Ourselves

By Olivia Pockett

What a paradox it is, to feel I am not *doing* enough when the full moon comes. Overcome with intuitive pulls on how to honor this cycle, I retreat into myself.

I walk half in a haze around my formulaic, simple kitchen this morning— the day of the lunar eclipse, the full blood moon on March the 3rd—and feel pulled in all sorts of directions. There is pain in my womb this morning I sense. A deep shifting of energy, of releasing universally held feminine pain, I am sure, for my bleed is not due until the new moon.

Was it my secret whispers to the moon last night that have brought this on? The fear spoken aloud, made true and now embodied in my most sacred of centers?

Any carved out moment of peace today seems strewn off kilter by an immense feeling of guilt. I'm not creating enough magic in this moment where the veil is thinnest. I sit outside to eat my breakfast, thanking the sun, moon, and stars for the energy to which this food has now landed into my hands, but restlessness eludes me. Not only do I feel overcome in the illumination of my shadows and fears, but the time we live in has lumped another bout of potentially negative thought patterns on us via the saturation of messaging through social media. My algorithm knows my Witchy tendencies, the accounts I call upon for knowledge and bombards my struggling cells today as to the *right* way to celebrate during lunar eclipse.

I sit there and wonder if this deconstructs our very power to begin with? As women, as Witches, we are an instinctive and magical species. Our bodies, in constant movement and transience will inform us what we need if we can tune into her rhythms. To be told how one should be feeling on a day such as today or indeed the most potent means of releasing to me seems contrived; shouldn't we be trusting our own nose to guide us in such a direction?

Last night, on the eve of the full moon, I did not gather with women. I did not make moon water or burn my fears alight into the night with sage. I made cocoa as I sang aloud, I stood before the moon and spoke with her. Alone, myself and the night, quiet enough to hear the moon whisper my own promises back to me. I came back inside and I sat on my wooden floor in meditation. My body wanted to move and I listened; hip rolls, ripples and effortless exhales spilled from me. I felt called to offer a gift back to the stars and placed the few crystals, flowers, shells and pens I had on my window sill, drinking in the moon's power. I said aloud my prayers for the greater good of all and the weights hoping to be released from my soul that night.

These rituals were not instructed or found in a spell book or Googled in advance. I simply dialed up and into the higher mind, the greater source which can guide us all. I have also, many a time, led personal and community ritual, using the former mentioned guides. However, I wake with a hangover or sorts this morning, that I somehow have not harnessed the portal power to my advantage and I wonder if I think this is only due to our exposure to how so many others utilize theirs. I nurse these feelings of inadequacy with the acknowledgement that any magic is magic enough. I remain outside and breathe in the clarity the morning holds me in. *Do not hold onto that which does not resonate with your spirit.* A message came to me, I soften immediately and let go of ideas surrounding what it means to honor and celebrate; for there truly is no correct or singular path. We must recognize that there is already enhanced energetic power over the course of these days—we do not need to also bear the weight of this trance of unworthiness, dampening our belief, our spirit in what are already challenging, emotional days.

To awe at the moon alone in her fullness is enough to say thank you. To make a piece of toast, listening to the knife crunch along the bread can be enough of a caught moment in stillness. I believe it is a matter of intention over experience so often with ceremony. For one could host a three day celebration, deep in the forest of this blood worm moon and lack presence, connection or indeed intention throughout the duration. Or one could make themselves a cup of cocoa in their unassuming kitchen and look up at the moon in reverence. Surely that can be enough?

KITCHEN WITCH'S CAULDRON

April Beltane Feast

By Melina Valdejo, owner of Pathways New Age Books

Beltane is a festival of fire, fertility, passion, and joyful abundance. Celebrated as the Earth bursts fully into bloom, this sacred feast honors vitality, pleasure, and the weaving together of spirit and body. The dishes below are vibrant, sensual, and alive with intention — crafted to celebrate creativity, connection, and the spark of life itself.

Beltane Flame-Kissed Stuffed Peppers

Ingredients, Measurements & Correspondences:

- ~ 4 bell peppers, halved and deseeded (vitality, protection, and creative expression)
- ~ 2 tablespoons olive oil (blessing, sensuality, and smooth energy flow)
- ~ 1 cup cooked quinoa or rice (fertility, nourishment, and abundance)
- ~ 1 cup cherry tomatoes, diced (love, joy, and life force)
- ~ 1 small zucchini, finely diced (balance, harmony, and growth)
- ~ 1 cup mushrooms, chopped (grounding, Earth wisdom, and transformation)
- ~ 1 cup chickpeas, cooked and drained (strength, fertility, and stability)
- ~ 2 cloves garlic, minced (protection, vitality, and passion)
- ~ 1 teaspoon smoked paprika (fire, transformation, and Beltane flame energy)
- ~ Fresh basil and parsley, chopped (love, prosperity, and renewal)
- ~ Sea salt and black pepper, to taste (grounding, balance, and protection)
- ~ Optional: ½ cup crumbled feta or vegan alternative (pleasure, nurturing, and sacred union)

Directions:

1. Preheat the oven to 400°F (200°C) or prepare a grill. As the heat builds, envision Beltane's sacred fire awakening joy and desire.
2. Lightly brush pepper halves with olive oil and arrange cut-side up on a baking sheet.
3. In a bowl, combine cooked quinoa or rice, tomatoes, zucchini, mushrooms, chickpeas, garlic, paprika, herbs, salt, and pepper. Stir clockwise, infusing the mixture with intentions of abundance and creative spark.
4. Spoon the filling generously into each pepper. Top with feta if using.
5. Bake or grill for 20–25 minutes until peppers are tender and lightly charred.
6. Serve warm, honoring the union of fire and Earth within the dish — and within yourself.

Ritual Blessing:

Fire awaken, passion rise,
 Green Earth dance before my eyes.
 Seed and flame and blossomed land,
 Life and love now walk hand in hand.
 Blessed Be!

KITCHEN WITCH'S CAULDRON

Beltane Buttered Greens with Garlic & Lemon

Ingredients, Measurements & Correspondences:

- ~ 1 bunch Swiss chard, kale, or mixed spring greens, chopped (growth, vitality, and renewal)
- ~ 1 tablespoon butter or olive oil (pleasure, nourishment, and softness)
- ~ 2 cloves garlic, thinly sliced (protection, strength, and sensual energy)
- ~ Zest and juice of ½ lemon (clarity, joy, and brightness)
- ~ Sea salt and black pepper, to taste (grounding, balance, and protection)
- ~ Optional: pinch red pepper flakes (fire, desire, and activation)

Directions:

1. Heat butter or olive oil in a wide skillet over medium heat.
2. Add garlic and sauté briefly until fragrant, taking care not to brown.
3. Add greens and toss gently until just wilted but still vibrant.
4. Finish with lemon zest, juice, salt, pepper, and optional red pepper flakes.
5. Serve immediately, honoring the lush generosity of the season.

Ritual Blessing:

Leaf and stem and greening land,
 Bless the work of heart and hand.
 Growing strong in sun and rain,
 Life returns in joyful flame.
 Blessed Be!

Beltane Strawberry Rose Sparkler

Ingredients, Measurements & Correspondences:

- ~ 1 cup fresh strawberries, hulled and sliced (love, fertility, and sweetness)
- ~ 1 tablespoon honey or simple syrup (pleasure, gratitude, and abundance)
- ~ 1 teaspoon rose water (love, devotion, and sacred union)
- ~ 1 cup sparkling water (celebration, uplift, and joy)
- ~ Optional: fresh mint leaves (vitality, freshness, and delight)

Directions:

1. Gently muddle strawberries with honey until juicy, focusing on pleasure and gratitude.
2. Stir in rose water, tasting gently.
3. Strain if desired, then pour into glasses.
4. Top with sparkling water and garnish with mint.
5. Sip slowly, celebrating love, beauty, and the joy of being alive.

Ritual Blessing:

Berry sweet and rose so fair,
 Joy and love float on the air.
 Fire and flower, heart and song,
 Beltane's blessing dances long.
 Blessed Be!



**Beltane
Menu**

ADVERTISEMENT



Wholesale
Pricing Available
Visit AzureGreen.net

AzureGreen

Family-owned for over 40 years, AzureGreen supplies metaphysical tools, ritual goods, and spiritual essentials, trusted by seekers, shops, and practitioners alike.



Candles • Oils • Herbs • Crystals
Ritual Tools

Reading Chakras

The Body

This spread can serve two purposes it can determine your physical health based upon the chakras as well as your emotional and spiritual health. In this sample spread I'm going to interpret it from the perspective of the emotional and spiritual. Your interpretation will be different due to the cards you pull from your deck while doing this spread.

	Card Number	Card Representation	Divinatory Meaning
 Crown Chakra 7	Card 1	Root Chakra My knowledge of my personality/my will-power/prcreation	The Six of Swords in this position indicates that the person is somewhat seeking changes and that they cannot ever be satisfied being tied to one thing.
 Third Eye Chakra 6	Card 2	Sacral/Sexual Chakra My resoluteness (goal orientation)/my self-control.	The Six of Cups in this position indicates that this person tends toward youthful exuberance and tackles things with a childlike attitude.
 Throat Chakra 5	Card 3	Solar Plexus Chakra My ability to be tolerant/my richness of ideas	The Two of pentacles in this spread indicates that the querant is well balanced and tolerant of others, and that their ideas are constantly evolving toward the betterment of the world.
 Heart Chakra 4	Card 4	Heart Chakra My ability to judge,	The Four of Swords in this position indicates that the person weighs over all decisions carefully before passing any judgements
 Solar Plexus Chakra 3	Card 5	Throat Chakra My talent in the arts.	The Six of Pentacles in this position indicates that the querant is extremely artistic and will share their artistic endeavors with others including teaching.
 Sacral/Sexual Chakra 2	Card 6	Third Eye My discipline and visions.	The Star in this position indicates that the person is gifted in clairvoyancy and other divinatory practices and can read other people around them.
 Root Chakra 1	Card 7	Crown Chakra My desire for understanding.	The Seven of Wands in this position indicates that the querant will always take a stand in most situations, and uses their awareness to advantage themselves and others.

Adderwort

This cosmopolitan genus of annuals, perennials, and deciduous, shrubby climbers numbers about 150 species, mainly distributed in temperate regions. Many are weeds and often invasive as garden plants. The wild bistort, *Persicaria bistorta*, is grown in herb gardens, but its variants are much better for borders and groundcovers, making a better show of color. *Persicaria bistorta* was once known as 'serpentaria', because of its contorted, snake-like rhizomes. A number of other species are used medicinally, including *P. aviculare* (knotgrass), an astringent, diuretic herb traditionally used in both Western and Chinese herbal medicine to expel intestinal parasites and control diarrhea, bleeding and discharges. Research has shown that it is an effective remedy for bacillary dysentery. *Persicaria hydropiper* (smartweed, water pepper) is also used medicinally, mainly for failure to menstruate. Similar in appearance to *P. hydropiper* is the tender, moisture-loving, *P. odorata*, used as a medicinal and culinary herb in SE Asia. The young leaves have a pungent cilantro-like aroma and develop a biting hot tastes as they age. Very similar in aroma and appearance to *P. odorata*, is the smaller-leafted *P. minus* (kesum), which is used in Malaysian cuisine to give a cilantro-like flavor to dishes such as laksa. It is also used medicinally for indigestion, and after childbirth. The essential oil is rich in aldehydes, which have potential in commercial food flavoring and perfumery. Erect perennial with a stout, contorted rhizome, and broadly ovate basal leaves, to 15cm (6in) long. Tiny, pale pink flowers appear in dense spikes, 5-7cm (2-3in) long, in summer,, followed by hard nutlets.



Common Name:	Adderwort
Other Names:	Bistort, Dracunculus, Easter Giant, Easter Ledges, English Serpentary, Knotweed, Patience Dock, Serpentaria, Serpentary, Dragonwart, Snakeroot, Snakeweed, Twice Writen.
Botanical Name:	<i>Persicaria bistorta</i> syn. <i>Polygonum bistorta</i>
Genus:	<i>Persicaria</i>
Family:	Polygonaceae
Location:	Europe, N and W Asia
Cultivation:	Rich moist soil in sun or partial shade
Propagation:	By seed sown in autumn or spring; by division in autumn or spring; by semi-ripe cuttings in summer, which root easily in soil or water.
Harvest:	Rhizomes are lifted in autumn and dried for decoctions, infusions, liquid extracts, powders, and tinctures. Young leaves are picked as required and used fresh.
Height:	25-50 cm (10-20 in)
Width:	45-90 cm (18-36 in)
Hardiness:	Z3-9
History:	Bistort is a member of the buckwheat family (Polygonaceae), and the plant's leaves and shoots were often eaten as a vegetable in puddings, soups, and stews by Native North Americans and Europeans. In northern England it was a primary ingredient in a special holiday herb pudding (made for Easter dinner) called "Easter mangiant". From that tradition sprung several other of bistort's common names—Easter giant and Easter ledges. The plant's many more (and sometimes sinister) popular names, however, were inspired by its unusual, double-twisted and creeping rootstock. Indeed, the species' name is from the Latin <i>bis</i> for "twice" and <i>torta</i> for "twisted", literally meaning "twice-writen", one of bistort's old British monikers. Snakeroot, dracunculus, and serpentary dragonwart were other popular names. An Asian relative of bistort, <i>P. multiflorum</i> —commonly known as fo-ti— is one of Chinese medicine's most esteemed and widely used Alterative tonics.
Parts Used:	Rhizomes or rootstock
Properties:	An astringent, soothing, cooling herb that reduces inflammation, controls diarrhea and bleeding and promotes healing.
Further Information:	prcupcc.org/herbs/herbsa/adderwort.htm

Do not use any herbal medicines or remedies without first consulting with your family physician. Herbal remedies often interact with modern medicines with negative effects.

Blue Lace Agate



Blue Lace Agate displays a blue and white lace pattern.

Blue Lace agate is banded in intricate patterns of light blue and white. Most of the best material comes from South Africa. Some specimens from Romania and South Africa have coatings of tiny sparkling drusy crystals.

Blue Lace Agate is a variety of banded Chalcedony, a mineral of the Quartz family. It is usually banded in layers of predominantly light blue, striped with brighter blues, whites, and even brown threads of color. Agate is sometimes called the earth rainbow because, in its various forms, the concentric bands in nature form nearly every color the earth can produce, including a colorless form.

Historically, Agate has been discovered with the artifacts of Neolithic people, and was used as healing amulets and ornamentation dating back to Babylon. Its medicinal uses continued through the ancient Greek and Egyptian civilizations, and spread throughout Africa and the Middle East into Russia. Agate sparked a world renowned stonecutting and polishing industry in Germany that flourished from the 15th to the 19th century, and exists today.

Physical Properties:

Category:	Chalcedony Variety
Colors:	Blue and White
Crystal System:	Rhombohedral (microcrystalline)
Chemical Composition:	SiO ₂
Geological Category:	Metamorphic
Strunz Classification:	-
Specific Gravity:	2.58-2.64
Crystal Habit:	Cryptocrystalline Silica
Hardness/Mohs Scale:	6.5-7.0
Cleavage:	None
Fracture:	Conchoidal with very sharp edges
Luster:	Waxy
Streak:	White
Diaphaneity:	Translucent
Occurrence:	Worldwide

Metaphysical Properties:

Astrology:	Pisces
Numerology:	5
Element:	Water
Chakras:	Throat (5th Chakra)
Keywords:	Communication, clarity, confidence
Tarot:	The Hierophant, Temperance, 5 of Cups King of Cups
Tone:	E
Gods:	Dylan, Ea, Enil, Khephera, Llyr, Manannan Mercury, Neptune, Osiris, Poseidon, Shu, Thoth
Goddesses:	Aphrodite, Aradia, Arianrhod, Cardea, Gaia, Hathor, Isis, Mariamne, Marie, Muses, Nuit, Tiamat, Urania, Yemaya

Physiological/Holistic Properties:

Preparation:	Elixir
Treatments:	Arthritic conditions, bone deformity, skeletal system, nervous system, capillaries, pancreas, digestive glands, outwardly manifesting growths, hydro- encephalism, vesicular eye disorders.
Body Part:	Brain


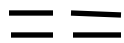

Emotional Healing: This stone is calming and centering. It can help soothe nervousness or worrisome dispositions and can calm over stimulated childlike energies. It helps to identify negative speech patterns and habits, shifting ones inner dialogue to more positive affirmations. It can facilitate shy people into expressing themselves more comfortably and more confidently, and it can quiet the more verbal affluent people in focusing only on a specific topic and reducing considerable unnecessary rhetoric.

Spiritual Healing: This stone teaches us that our words are the creation of our reality, and can be a reflection of the higher self. Therefore it assists in the connectivity of proper manifestation of ideas into reality, while stilling racing thoughts or ideas.


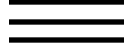
Affirmation: I communicate my ideas with clarity, conviction, confidence, and eloquence.

A MONTH IN I-CHING


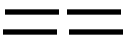
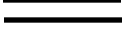
APRIL 2026

 **April 1-April 7**
CHIN—Progress
 **LI**—Fire, Brightness, Beauty
 **K'UN**—Earth, Receptive, Devoted

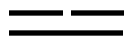
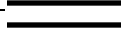
By being firm in correct action, good fortune is destined to receiving good fortune. As long as you are mindful there will be no error. A blessing will be granted by a close friend or a family member. Gain the trust of others and act within the common aim. Though there will be some trials to overcome, they will be achieved with patience and perseverance. You will have an overall successful completion of your goals provided that you withhold tendencies to be judgmental.

 **April 8-April 14**
TA KUO—Excess
 **TUI**—Lake, Marsh, Joyful
 **SUN**—Wind, Wood, Gentle

Whatever direction that you move in will be advantageous and will lead to success. However, in order to garner the success you will have to be ready to separate yourself from the aid of others and work alone. This is not the time to rely upon others to achieve what you are looking for, instead what will be required is self-reliance and perseverance on your part. It is time to take the bull by the horns and work towards achieving your goals.

 **April 15-April 22**
SUN—Decrease
 **KEN**—Mountain, Arresting Progress
 **TUI**—Lake, Marsh, Joyful

With sincerity comes great fortune., freedom from error, advantage in every movement that shall be made. This is a time for personal restraint. This week suppress the ego and rely upon the help of others. Work with them to achieve the common good . There will be no obstructions that will interfere with your path if you work with others and heed their sound advice. Take this **advice** and take appropriate actions upon it.

 **April 23-April 30**
TA KUO—Excess
 **TUI**—Lake, Marsh, Joyful

Like two weeks ago it is now a time to continue making your progress on your own. You have garnered enough aid and advice from others, and you are implementing your plans according to the advice that the others have given you. Now comes the time to weigh all that advice carefully and then make the moves toward the finalizing the project on your own. Success is guaranteed.

DAILY CORRESPONDENCES

Within our magickal workings we have to take into consideration what times of the year, what months, even what days will have prevalent influences on the success of our works. The days of the week although very significant are often ignored. For example I'm sure you've heard these common phrases "I Hate Mondays!" "Well it's Hump Day so we're almost to the weekend" or "Thank God its Friday". Significantly these phrases are also applicable in magical rites.

In this article I'm going to provide a table of correspondence for each of the days of the week to assist you in best making use of the days to net the best results.

SUNDAY

Planet:	Sun
Basic Energy:	Will
Basic Magick:	Success, Health, Healing, Confidence and Hope, Prosperity, Abundance, Growth, Enlightenment, Strength, Promotion, Fame, Wealth, Career, Ambition, Goals, Personal Finance.
Gender:	Masculine
Element:	Fire
Perfumes:	Heliotrope, Orange Blossom, Cloves, Frankincense, Ambergris, Musk, Myrrh
Incense:	Mastic, Palaginia, Lemon, Frankincense
Wood:	Laurel
Color:	Orange, Yellow or Gold, Amber
Rules:	Leo
Crystals:	Citrine, Sunstone, Pyrite, Gold, Goldstone, Carnelian, Orange Calcite, Tiger's Eye, Amber, Quartz, Diamond, Yellow Topaz, Red Agate.
Herbs:	Sunflower, Chamomile, Calendula, Marigold, Bergamot, Oak, Rosemary, Oregano, Heliotrope, Buttercup, Cedar, Beech, Cinnamon, Angelica, Eyebright, Juniper, St. John's Wort.
Gods/Goddesses:	Helios, Amaterasu, Sunna, Sulis, Ra, Bastet, Sekhmet, Freyr, Apollo, Belenos, Aurora, Mithra, Brigid
Angel:	Michael
Tarot:	The Sun
Energy Keywords:	Aggression, Authority, Autocracy, Confidence, Courage, Determination, Dignity, Egocentricity, Faith, Fortitude, Individualism, Leadership, Loyalty Optimism, Poise, Power, Reliability, Stubbornness, Vitality, Willfulness
Other Qualities:	Family, Sibling Relationships, Advancement, Drama, Fun, Authority Figures, Law, Fairs, Crops, Totem Animals, Volunteer Services, Civic Duties, Promotion, The God, Men's Mysteries, Children, Buying, Selling, Speculating.

MONDAY

Planet:	Moon
Basic Energy:	Emotion
Basic Magick:	Protection, Psychism, Agriculture, Domestic, Long Life, Medicine, Travels, Visions, Theft (New Moon), Intuition, Dreams, Shadow Work, Emotional Balance, Friendship
Gender:	Feminine
Element:	Water
Perfumes:	White Poppy, White Rose, Wallflower
Incense:	Myrtle, Honeysuckle, Jasmine, Sandalwood, Wormwood
Wood:	Willow
Color:	Silver, Gray-White, White, Blue
Rules:	Cancer
Crystals:	Silver, Moonstone, Pearl, Fluorite, Amethyst, Quartz, Sapphire, Opal, Aquamarine, Mother of Pearl, Selenite
Herbs:	Moonflower, Jasmine, Gardenia, White Rose, Wintergreen, Catnip, Comfrey, Sage, Chamomile, Mint, Lily, Lotus, Moonwort, Myrrh, Poppy, Sandalwood, Willow
Gods/Goddesses:	Thoth, Selene, Diana, Artemis, Luna, Hecate, Phoebe, Kalfu
Angel:	Gabriel
Tarot:	The Moon
Energy Keywords:	Creativity, Domesticity, Flexibility, Growth, Imagination, Impressionability, Intuition, Kindness, Magnetism, Femininity Maternal, Matter, Motherhood, Peace, Plasticity, Protectiveness, Psychism, Receptivity, Sensitivity, Sympathy, Visionary

TUESDAY

Planet:	Mars
Basic Energy:	Action
Basic Magick:	Destination, Courage, Surgery, Physical Strength, War, Change
Gender:	Masculine
Element:	Fire
Perfumes:	Hellebore, Carnation, Patchouli
Incense:	Lignum Aloes, Plantain
Wood:	Juniper, Acacia
Color:	Red
Rules:	Aries, Scorpio
Crystals:	Ruby, Red Garnet, Red Jasper, Carnelian, Sardonyx, Moonstone, Pearl, Aquamarine, Selenite, Amber
Herbs:	Night-Blooming Jasmine, Myrtle, Moonwort, Vervain, White Rose, Poppy, Camphor, Dragon's Blood, Nettle, Thistle, Wormwood, Hawthorn, Red Flowers and Plants, Basil, Ginger, Black Pepper, Patchouli, Snapdragon, Holly, Coneflower, Cacti
Gods/Goddesses:	Tiw, Lord Hanuman, Mars
Angel:	Chamuel
Tarot:	King of Swords
Energy Keywords:	Assertiveness, Combative, Constructive, Courage, Defiance, Destructive, Dynamic, Energy, Expressiveness, Fearlessness, Forcefulness, Frank, Heroics, Impulsiveness, Leadership, Passionate, Self Reliance, Spontaneity, Violence.

WEDNESDAY

Planet:	Mercury
Basic Energy:	Speed
Basic Magick:	Communication, Conjurations, Predictions, Knowledge, Writing, Eloquence
Gender:	Masculine
Element:	Air
Perfumes:	Sweetpea, Lavender, Mastic, Frankincense, Cloves
Incense:	Cinnamon, Cinquefoil
Wood:	Acacia, Juniper, Oak, Aspen
Color:	Blue or Silver, Yellow, Gray
Rules:	Gemini, Virgo
Crystals:	Sodalite, Moss Agate, Opal, Aventurine
Herbs:	Cinnamon, Periwinkle, Dill, Sweetpea, Cinquefoil, Ferns
Gods/Goddesses:	Athena, Odin, Woden, Mercury, Hermes, Lugh, Vishnu, Buddha
Angel:	Raphael
Tarot:	The Magician
Energy Keywords:	Activity, Adaptability, Agility, Alertness, Analytical, Articulate, Awareness, Brilliance, Changeability, Critical, Dexterity, Diffusiveness, Discriminatory, Duality, Efficiency, Expressiveness, Indecisiveness, Intelligence, Irresponsibility, Precision, Reason, Restlessness, Sensory, Skepticism, Verbosity, Versatility.

THURSDAY

Planet:	Jupiter
Basic Energy:	Expansion
Basic Magick:	Money, Luck, Religion, Healing, Trade and Employment, Treasure, Honors, Riches, Legal Matters
Gender:	Masculine
Element:	Fire
Perfumes:	Stock, Lilac, Storax, Aloes
Incense:	Nutmeg, Henbane
Wood:	Pine
Color:	Purple, Indigo, Blue
Rules:	Sagittarius, Pisces
Crystals:	Sapphire, Carnelian, Lapis Lazuli, Amethyst, Citrine
Herbs:	Basil, Cinnamon, Bay
Gods/Goddesses:	Thunor, Jove, Jupiter, Vishnu, Brhaspati
Angel:	Zadkiel
Tarot:	The Emperor
Energy Keywords:	Aspiration, Benevolence, Charity, Confidence, Dignity, Expansion, Extravagance, Faithfulness, Generosity, Growth, Gullibility, Humanity, Humorous, Indulgent, Kindness, Merciful, Optimism, Orthodoxy, Philanthropy, Poise, Pompousness, Radiance, Religiousness, Reverence, Understanding

FRIDAY

Planet:	Venus
Basic Energy:	Socialization
Basic Magick:	Love, Friendships, All Love Matters, Affection, Partnerships, Money, Sex
Gender:	Masculine
Element:	Air
Perfumes:	Stephanotis, Apple Blossom, Musk, Ambergris
Incense:	Saffron, Verbena
Wood:	Myrtle
Color:	Light Blue, Green, Pale Green
Rules:	Taurus, Libra
Crystals:	Rose Quartz, Citrine, Black Tourmaline, Labradorite, Smoky Quartz, Obsidian
Herbs:	Patchouli, Cedar, Mugwort, Apple, Lily, Birch, Verbena, Ivy, Rose, Sage, Moonwort, Jasmine, Sandalwood
Gods/Goddesses:	Frigg, Venus
Angel:	Anael
Tarot:	The Empress
Energy Keywords;	Affectionate, Artistic, Attractiveness, Beauty, Consideration, Constructive, Cooperative, Courteous, Devoted, Evasive, Feminine, Flirtatious, Gentle, Harmonious, Impressionable, Indifference, Indolence, Love, Obstinate, Originality, Refinement, Responsiveness, Sociability, Vacillation

SATURDAY

Planet:	Saturn
Basic Energy:	Authority, Crossroads, Restriction
Basic Magick:	Banishing, Rewards, Duties, Responsibilities, Finding Families, Works of Magick, Buildings, Meditation, Life Doctrines
Gender:	Feminine
Element:	Earth
Perfumes:	Hyacinth, Pansy
Incense:	Pepperwort, Acidulous, Black Poppy Seeds, Henbane, Lodestone, Myrrh
Wood:	Oak
Color:	Black, Midnight Blue
Rules:	Capricorn
Crystals:	Black Obsidian, Salt, Pewter
Herbs:	Mullein, Myrrh, Poppy, Cypress Wood, Patchouli, Black Poppy Seeds, High John the Conqueror
Gods/Goddesses:	Shani, Saturn, Hecate, Saetere, Cronos, The Norns, Loki, Hel
Angel:	Cassiel
Tarot:	The Fool
Energy Keywords:	Authority, Caution, Defensive, Diplomatic, Fearful, Humility, Justice, Law, Old, Patience, Pessimism, Respect, Responsible, Restraint, Rigid, Serious, Severe, Sincere, Stern, Thrifty, Time.



Fairies of the World

Black Angus



Land of Origin: England and Scotland

Other Origins: Faerie stories of foretellers of death are prevalent worldwide.

Other Names: Cu Sith (*Scotland*), Barguest (*Scotland*), Cwn Annwn (Wales), Gabriel's Hounds (*Germanic Countries*)

Element: Water

Appearance: Normally seen as a large black dog with yellow eyes and sharp fangs. He shows himself to those who will be dead within a fortnight. Lowlanders of Scotland claim that he has horns on his head. This description may have derived from association with the Christian Devil.

Active Time: Night

Lore: The Black Angus often serves as an omen of death. At the passing of a notable person, he may appear followed by all the other dogs of the local area, in what resembles a funeral procession. He and the other dogs will herald the death of the person with howling and barking. If you got in his way you would be greeted by a low growl and then struck by his paw or his teeth leaving a wound that never heals. Due to it's nature the Black Angus cannot cross rivers or running streams. Though he is a water spirit, running water is an anathema to him.

Where Found: It is unknown exactly where to locate them as they come to those whom will be dead in a fortnight. So like many death harbingers it's wise not to seek them.

How to Contact: Again as stated above it is inadvisable to come into contact with them.

Ritual Help: None whatsoever.

Mesoamerican Astrology



6. Miquiztli (Death)

Sign:	Death	Dates:	January 13
Nahuatl Name:	Miquiztli (Death)		February 2, 22
Mayan Name:	Kimi (Death)		March 14
Day:	6		April 3, 23
Direction:	North		May 13
Element:	Earth		June 2, 22
Planet:	Moon		July 12
Core Significance:	Understanding		August 1, 21
Strengths:	Generous, Grounded, Selfless		September 10, 30
Weaknesses:	Fragile, Over-Sensitive, Self-Sacrificing		October 20
Color:	White, Purple		November 9, 29
Stone:	Carnelian		December 19
Compliment:	Death		
Challenge:	Eagle		
Occupation:	Counselor, Doctor, Historian, Philosopher		
Gods:	Tecciztecatl, Meztli		

This sign rules personal sacrifice and acceptance of change. It is a sign of politics and practicality. Persons under this sign are community builders and workers

Death is word given to man; language, law, ethics. People of this sign are often introverts, who are not able to free themselves from the gaze of others. Life with a House sign will make a Death sign happy, and bring them self-confidence

It's a good day for reflecting on your priorities in life, a bad day for ignoring possibilities. It is a day of transformation, signifying that briefest moment between old endings and new beginnings.

Egyptian Astrology



6. Isis

Sign:	Isis
Dates:	March 11-31, October 18-29, December 19-31
Western Equivalent:	Pisces
Planetary Ruler:	Moon, Earth, Uranus
Compatibility:	Osiris, Thoth
Colors:	White, Blue
Symbol:	Throne/Steps

People born under this sign are honest and straightforward. They have a genuine sense of humor which makes them excellent companions. They are intelligent and skilled, but they don't acknowledge their capabilities until they are challenged.

Isis is the Supreme Goddess of Egypt. She is the embodiment of motherhood and femininity. The wife of Osiris, she protects newborns and seafarers. According to Egyptian mythology, she managed to revive her husband, who was killed by his brother Set. She is portrayed as a woman with bull horns, surrounding a solar disk. Often seen sitting on her lap is her son the God Horus. Horus is the messenger of the gods and the avenger.

The Isis Man

Men born under this sign are ambitious with open personalities and a friendly disposition. They live pleasurably without remorse. Though they recognize that others are entitled to their opinions, those opinions are not of interest to them. He prefers to do things his own way. He will help friends and relatives financially, as his generosity knows no bounds. Because he is amorous, he has trouble building strong relationships with women, and often finds his advances to be unrequited.

The Isis Woman

The woman born under this sign is always ready to meet people who ask her for help. She is sociable and due to her natural charisma she is able to solve any problem. She spends a great deal of time seeking to find a man who meets her same qualities in order to build a serious relationship with him. As an idealist however, she often finds herself disappointed. Because of her unrealistic expectations maintaining a stable relationship is virtually impossible and she may end up spending a great deal of time alone. She is very selfless, and will do anything within her power to gain the trust of her chosen one as soon as possible.

Eastern Astrology—Chinese



6. Snake

The Sign:	Snake
Animal:	蛇 <i>shé</i>
Earthly Branch:	巳 <i>sì</i>
Name of Period:	巳時 <i>Sishí</i>
Yin/Yang:	Yin
Trine:	2nd
Element:	Fire
Compatibility:	
Good:	Ox, Rooster, Monkey
Friendly:	Horse, Dragon, Goat, Dog, Rabbit, Rat, Snake
Conflict:	Pig
Avoid:	Tiger
Time:	9:00-10:59
Years:	1965, 1977, 1989, 2001, 2013, 2025, 2037. ...
Cardinal Point:	South, Southeast
Lunar Month:	4th
Season:	Summer
Western Equivalent:	Taurus
Flower:	Orchid, Cactus
Numbers:	
Lucky:	2,8,9
Avoid:	1,3,7
Colors:	
Lucky:	Black, Light Yellow, Red
Avoid:	Brown, Gold, White
Personality Traits:	Wise, analytical, sensitive, good sense of humor, goal-oriented, mysterious, attractive, philosophic, suspicious, capricious, reserved, power-hungry.

People born under this sign are secretive and mysterious. They do not overtly express their emotions and tend to keep to themselves. Even when they are in an extreme emotional state, they will outwards remain calm and firm. Their reserved, cool and unapproachable nature, often raises the suspicions of others because they cannot be predicted.

Chakras



Anahata (Unstruck Sound)

Anahata (Sanskrit; **अनाहत**, meaning “unstruck”) is the 4th primary chakra described in various Hindu, Yogic, Shakta, and Buddhist tantric traditions. It traditionally is associated with the heart region. It corresponds to the concepts of balance, emotional regulation, compassion, and relational awareness in classic tantric literature.

The literal meaning of the Sanskrit word is “sound produced without touching two parts”. It can also mean “pure”, “clean”, or “stainless”. This chakra signifies a state of freshness which appears when we are able to detach ourselves and look at the contradictory experiences of life with an open mind. We are not usually used to the effects that occur with the contradiction of the two opposing forces. With this chakra appears the possibility to integrate those two oppositions and obtain the effect (in this case, Sound), with the confrontation of the two forces (without touching). It is the chakra of cooperation and integration, which brings peace and a new perspective in a world, which is abundant with contradictions.

In Yogic traditions, this chakra is associated with compassion, emotional openness, and unconditional love. It is described as the energetic center that integrates emotional experiences and relational connection. In practicing cultivating empathy, forgiveness, and loving awareness, we are capable of regulating and balancing this chakra.

This Chakra is located in the central channel of the spine near the heart. It is represented by a lotus flower with 12 petals. Inside there is a smoky region at the center of the two triangles, which creates a shatkona **शतकोना**. The Shatkona **शतकोना** is a symbol used in Hindu Yantra, which represents the union of the male and female. Specifically it is meant to represent Purusha **पुरुष** (The Supreme Being) and Prakriti **प्रकृति** (Nature). The deity associated with this chakra is Vayu **वायु**. Vayu is described as smoke like, four armed, holding a kusha and riding an antelope. The antelope is the animal associated with this chakra. The hexagram associated with this chakra, represents the air, which moves in all four directions.

The seed syllable is the dark-grey mantra “Yam” **यं**. In the Bindu about the syllable is the deity Isha. Isha is bright white or blue in color. He is depicted as having one or five faces, with three eyes on each face. He may have two, four, or ten arms. He is clad in a tiger skin, holds a trident and a drum. He grants blessings and dispels fear. His shakti is Kakini, She is shining yellow or rose colored. She is depicted in numerous variations: one, three, or six faces; two or four arms; and holds a variety of implements (occasionally a sword, shield, skull, or a trident). She is seated on a red lotus. Another deity ascribed to Yam is Vayu, the god of wind and prana. Hrim is also another bija associated with the center of this chakra.

The twelve petals are inscribed with Sanskrit symbols which are normally colored vermillion. The symbols which will be listed on the next page are each associated with a matching vrittis or divine quality of the heart, as well as their corresponding reflexive modifications which are differentiated from the divine mind, each one is considered to be rising from spiritual ignorance.

The Twelve Petals and their Vrittis:

1. Kam आया	Bliss	Asha: Wish, desire, hope
2. Kham खाम	Peace	Cinta: Thoughtfulness, anxiety
3. Gam गम	Harmony	Cesta: Effort
4. Gham गम	Love	Mamta: Possessiveness, fondness
5. Ngam नगम	Understanding	Dhamba: Arrogance, vanity
6. Cham चाम	Empathy	Viveka: Discrimination
7. Chham छम	Clarity	Vikalata: Languor
8. Jam जाम	Purity	Ahamkara: Conceit, egoism, pride
9. Jham झाम	Unity	Iolata: Covetousness, avarice
10. Nyam न्याम	Compassion	Kapatata: Duplicity, hypocrisy
11. Tam टैम	Kindness	Vitarka: Indecision, argumentativeness
12. Tham थाम	Forgiveness	Anutapa: Regret, burning misery

You will note that half of these are positive traits and the other have negative. The positive traits of the Vrittis are growth promoting, while the negative or neutral traits are self-justifying defense tendencies the perpetuate the ego's boundaries instead of expanding and refining it. Harmony balance and proportion are the key elements in this fulcrum. One must determine which of these is growth promoting and virtuous, or inappropriate and self limiting.

Anahata is considered the seat of the Jivatman and Parashakti. This is a tiny flame inside the heart. It was named as such because sages were believed to hear the sound of the Anahata. It is associated with air, touch, and the actions of the hands. It is associated with the ability to make decisions outside of karmic influences. It dictates that one should "follow their heart", and take action based upon the dictates of the higher-self. It is thus known as the Heart Chakra. It is associated with love, compassion, charity, and psychic healing. Meditation on this chakra is said to bring about the following Siddhis: mastery of speech, compassion towards others, and the ability to enter the body at will.

The Minor Chakra associated with Anahata is known as Hrit or Hridaya. It has eight petals, three regions: a vermillion sun region, a white moon region, and a deep fire red region. Within the center region there is a red wish-fulfilling tree, Kalpavriksha, which is symbolic of the ability to manifest what one wishes to happen in the world.

It is also known as the Surya (sun) chakra, which is located slightly to the left below the heart. It's role is to absorb energy from the sun and provide heat to the body and other chakras.

In Yogic practices, it is awakened by asanas, pranayamas, and the practice of Ajapa japa. and purified by Bhakti (devotion). Ajapa japa is the constant repetition of a mantra in this case the Yam. This practice is combined by breathing until one feels the flow of compassion penetrating the heart chakra.

Here are some skills you can as practice to help you maintain your focus on the mantra:

- Rest your attention in the mantra, allowing other energies to pass through your mind without engaging them
- Relax into the flow and speed of the mantra, whether the pulse is slow, medium, or fast
- Center your heart—your devotional self—as well as your intellect in the mantra
- If distracting thoughts dislodge your attention, slow your japa down until you can refocus with more stability.

Planetary Forces

Mars



Mars is the planet of willpower, energy, sexual drive, and aggressive behavior. Expressed in its positive form, Mars gives a person great energy, the will to carry out daunting tasks, endurance, a strong sexual drive, an adventurous nature, and an independent-minded and assertive personality. Expressed in its negative form, Mars instills recklessness, impatience, a quick temper, and an argumentative and overly aggressive personality.

Mars, the fourth planet from the Sun, was named after the Roman god of war. Mars has two small moons called Phobos and Deimos. Orbiting the Sun every 1.88 years, Mars is roughly 142 million miles from the Sun (or 53 percent further from the Sun than the Earth). The temperature on its surface ranges from -189 to 63 degrees Fahrenheit.

At its closest approach to the Earth (34 million miles), Mars is the brightest object in the night sky after Venus. Its distinctly reddish color results from its heavily oxidized surface. Its thin atmosphere (the pressure is only 0.6 percent of Earth's) is comprised mainly of carbon dioxide with small amounts of nitrogen, argon, and oxygen.

Mars' poles are covered with ice. The northern hemisphere is less cratered than the southern hemisphere, leading scientists to believe that its surface is younger (consisting of relatively recent lava flows). Mount Olympus is the largest volcanic structure on Mars (or anywhere else in the Solar System), jetting 15.5 miles (82,000 feet) above the surface. Several American Mariner spacecraft have explored Mars; in 1976 two Viking lander crafts even landed on the surface.

In Roman mythology, Mars was the god of war and the son of Jupiter (king of the gods). Since Mars fathered Romulus (the legendary founder of Rome), he was generally regarded as the father of the Roman people.

Spiritual Significance.

The symbol of Mars is formed by the circle of spirit surmounted by the arrow which represents the masculine aspect of the life force. This Martian glyph is used in biology to represent the male.

Mars is the red planet and that is the color which signifies the life force. The Neolithic people buried their dead smeared in red ochre in the belief that this symbolic color of the life force ensured that the soul of the dead person would be reborn into another body.

In ancient times blood was regarded as sacred because of its color and the practice of making sacrifices to appease the Divine originated in the belief that blood transmitted the life force. In our enlightened age we know that sacrificial offerings are cruel and unnecessary; the only true sacrifice is that made by the enlightened soul incarnating on the altar of material existence.

In some respects the Martian planetary influence is the opposite to the Venusian. In ancient mythology Mars was the god of war and within this martial image is hidden great truths. If things stagnate and degenerate they must be swept away if any progress is to be made. In this sense the planetary energy of Mars represents the destroyer who cleanses and purifies so that a new beginning or cycle can commence.

Sacrifice on its highest spiritual level is the transmutation of energy into a different form. Following the occult path the aspiring magician may be called upon by the powers-that-be to make a number of sacrifices, some of which may be small but others will test the character and individual strength of the seeker.

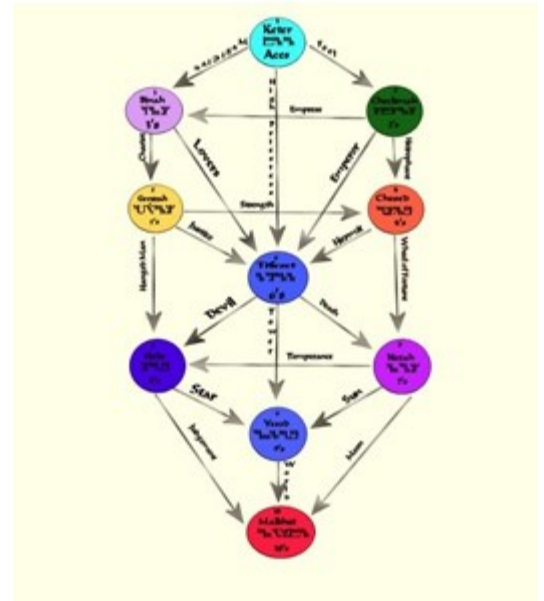
How the individual reacts to such situations will determine how he/she will progress on the magickal path. Whatever happens, the magician will be changed by the experience which is the transmutation of the sacrificial act. In some ways the planetary energy of Mars is a blind force, yet it cannot escape being the instrument of the powerful destiny that is the controlling influence in the Universe.

The Martian force can be invoked by the magician who lacks the energy or motivation to act decisively on a situation. The planetary force of Mars provides the magician with hidden reserves of physical, mental, and spiritual energy.

Rules:	Strength, struggle, war, anger, conflict, aggression.		watermelon)
Day:	Tuesday	Qabala:	5 Gevurah—Strength, severity
Element:	Fire	Angel:	Kamael
Color:	Red, scarlet	Incense:	Cypress, pine, sulfur, tobacco
Zodiac:	Aries, sometimes Scorpio	Plants:	Absinthe, all-heal, aloes, asafetida, basil, betony, capers, chilis, coriander, dragon's blood, gentian, ginger, garlic, mustard, onion, pepper, radish, rue, sarsaparilla, tarragon
Tone:	Do, C	Trees:	Holly, kern-oak
Letter:	T	Animal:	Basilisk
Number:	2, 3, or 16, possibly 5	Goddesses:	Anath, Brigit, Dione, Morrigan
Metal:	Iron, steel	Gods:	Ares, Crius, Heracles, Mars, Nergal
Jewel:	Bloodstone, garnet, ruby, asbestos, flint, jasper (red), lava, onyx, pipestone, rhodochrosite, rhodonite, sard, sardonyx, tourmaline (red,		

Tree of Life
Sacred Paths of the Qabala
Path 28

Titles:	The Ruler
Intelligence:	Constituting Intelligence
Place:	Netzach to Yesod
Hebrew Name:	Tzaddi (fish-hook)
Number:	90, 900
Angel:	Malkiel
Qlippoth (Demons):	Ba'airiron; (The Flock)
Demons of Hidden Paths:	Hemethteritch
God Forms:	Aphrodite, Nut, Athene, Juno, Venus
Color Atziluth:	Violet
Color Briah:	Sky Blue
Color Yetzirah:	Bluish Mauve
Color Assiah:	White tinged with Purple
Incense:	Galbanum
Animals:	Man, Eagle, Peacock
Legendary Beings:	Water Nymphs, Sirens, Lorelei, Mermaids
Stones:	Glass, Chalcedony
Plants:	Olive, Coconut
Tree:	Elder
Zodiac/Element:	Aquarius
Tarot Card:	The Star (Daughter of the Firmament)
Human Body:	Kidney's, Bladder
Diseases:	Apoplexy
Magickal Powers:	Control of temporal imbalance, defense.



Potions, Powders, Charms, and Spells



How to Make Black Salt, the ultimate protective ingredient By Emily Thornton

Black salt—often called *witch's salt*—is one of the most potent protective tools in magical practice. This dark, energy-charged blend is known for its ability to absorb negativity, create strong energetic boundaries, and banish unwanted influences.

It's important to note that this is **not** the same as edible black salt (kala namak) used in cooking. Magical black salt is created specifically for spiritual purposes and should **never be consumed**.

In this guide, you'll learn multiple methods for crafting your own black salt, from traditional ash-based recipes to modern alternatives. You'll also explore how to charge, use, store, and safely handle it. Whether you're protecting your home, reinforcing boundaries, or enhancing spellwork, black salt is an essential addition to any practice.

Understanding Its Power

Magical black salt is typically made by combining salt with ash, charcoal, or other darkening agents, then charging it with intention. It is:

- A blend of salt and a blackening element (ash, charcoal, etc.)
- Infused with protective and banishing energy
- Used strictly for spiritual purposes
- **Not edible**

Why It's So Effective

Black salt draws its strength from several symbolic elements:

- **Salt:** Long associated with purification and protection
- **Black color:** Absorbs and neutralizes negative energy
- **Ash:** Represents transformation and banishing
- **Intention:** Your focused energy amplifies its power

What Black Salt Does

- Absorbs negative energy
- Creates protective boundaries
- Banishes harmful influences
- Aids in breaking hexes or curses
- Grounds and neutralizes energy
- Protects people and spaces

When to Use Black Salt

Protection

- Around doorways and windows
- Along the perimeter of your home
- In protection jars or sachets
- As part of protective circles
- Buried at property corners

Banishing

- During banishing rituals
- To clear negative energy from spaces
- When ending toxic relationships or habits

Cleansing

- For ritual tools
- After arguments or illness
- To clear lingering or unwanted energy

Essential Ingredients: Base Salt

You can use:

- Sea salt (traditional and powerful)
- Kosher salt (pure and affordable)
- Table salt (accessible and effective)
- Rock salt (strong, coarse energy)

Recommended starting amount: 1 cup

Coloring Agents

Traditional options:

- Fireplace ash
- Incense ash
- Burnt herbs
- Charcoal powder

Modern alternatives:

Activated charcoal

- Black food coloring (less traditional)
- Cast iron scrapings

Optional Additions

- Black pepper (banishing)
- Rosemary, sage, basil, bay (protection)
- Eggshell powder (grounding and protection)
- Coffee grounds (banishing, grounding)
- Essential oils (a few drops only)

Methods for Making Black Salt

1. Traditional Ash Method

Mix salt with finely sifted ash and optional herbs. Stir clockwise, focusing on your intention, then store.

Simple charging incantation:

*“Salt of earth and ash of fire,
Protect and banish, this I desire.
Absorb all negativity,
Shield and guard, so mote it be.”*

2. Charcoal Method (Quick & Easy)

Blend salt with activated charcoal until evenly black. Add black pepper if desired, then charge and store.

Best for: Beginners or quick preparation

3. Burnt Herb Method

Burn protective herbs to ash, grind finely, and mix with salt. This method adds layered herbal energy.

Best herbs:

- Rosemary (protection)
- Sage (cleansing)
- Bay (banishing)
- Basil (protection)

4. Cast Iron Method (Folk Tradition)

Heat salt in a cast iron pan, stirring until it darkens. This method infuses the salt with the protective energy of iron.

5. Eggshell Method

Grind baked eggshells into powder and combine with salt and ash or charcoal.

Symbolism: Protection, grounding, and resilience
Charging Your Black Salt

Basic Method

- Place your hands over the salt
- State your intention clearly
- Visualize it absorbing protective energy
- Seal with a phrase like: *“So mote it be”*

Enhanced Methods

- **Moon charging:** During a waning or dark moon
- **Storm charging:** During a thunderstorm (safely covered)
- **Ritual charging:** Within a protective circle

How to Use Black Salt

Around the Home

- Doorways, windowsills, and corners
- Property boundaries
- Floor washes (small amounts)

In Spellwork

- Protection jars and sachets
- Banishing rituals
- Protective circles

For Personal Protection

- Carry in a small pouch
- Place under your bed
- Add to charm bags

Storage and Shelf Life

Storage Tips

- Use a sealed glass jar
- Label clearly: **“Not for Consumption”**
- Keep in a cool, dry place
- Store away from food and pets

Shelf Life

- Indefinite if kept dry
- Recharge every 6–12 months
- Replace if moldy, wet, or energetically “heavy”

Disposal

Dispose of black salt after heavy use or banishing work.

Methods:

- Bury away from your home
- Wash away in running water
- Seal and discard in outside trash

Always thank the salt before disposing of it.

Safety Considerations

- **Never consume black salt**
- Keep away from children and pets
- Avoid inhaling ash or dust
- Do not use on skin
- Wash hands after handling

Black Salt vs. Other Salts

- **Regular salt:** General purification and blessing
- **Black salt:** Banishing and protection
- **Kala namak:** Edible cooking salt (not magical)
- **Red salt:** Love, passion, attraction

Can I eat black salt?

No. It is not food-safe.

How much should I make?

Start with 1 cup—this will last a long time.

Does it expire?

No, but it should be recharged periodically.

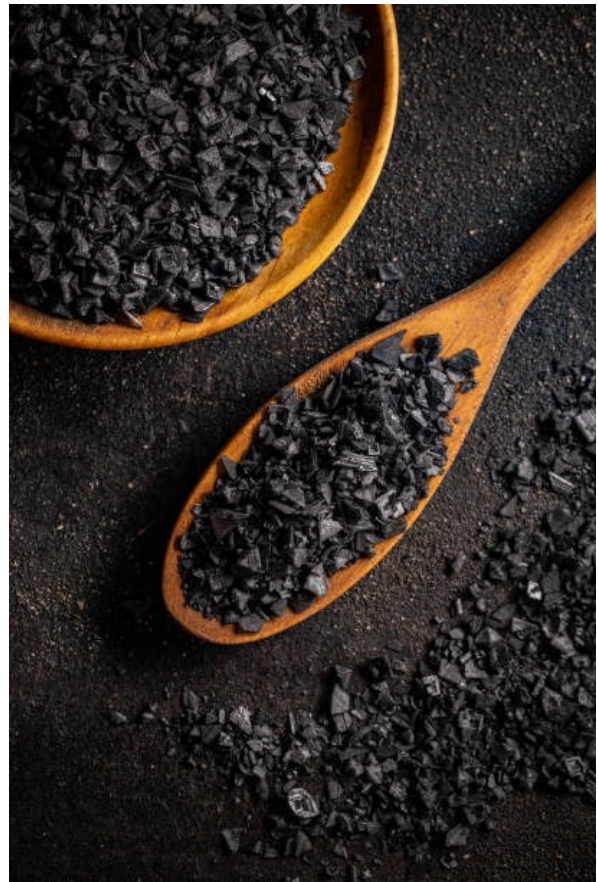
Can I combine it with regular salt?

Yes, they complement each other well.

Black salt is one of the most versatile and effective tools in magical practice. Simple to make and deeply personal, it carries your intention in every grain. Start with a method that feels right to

you, charge it with purpose, and explore how it fits into your work. Over time, you’ll develop your own variations and uses.

May your protections be strong, your space be safe, and your boundaries unwavering.



Fantastic Familiars

A Familiar Story “*Shabti*”

By Michael Waterman

In 1988, I moved into my dream apartment. I was very excited because I had a studio in New York's Greenwich Village! The building was on Barrow street which I'd never heard of until then. The apartment was on the second floor towards the back of the building. My eleven windows faced the beautiful courtyard. There were trees wrapped with white lights. In the center of the courtyard was a gazebo and inside was a life size statue of the Goddess Diana with her hound and a stag. The apartment had 14 foot ceilings and exposed brick walls. It was 45 feet long, and only 9 feet wide. The bathroom was ridiculously small and inside was a huge bathtub which sat on claw and ball feet. On the wall was a thin mirror cabinet above a dentist's spit sink, (seriously) and a toilet. There was barely room to move, the bathroom was so small you had to go out of it to change your mind. Outside of the bathroom was a toilet closet. There was another closet next to the fireplace, which I always thought was a crazy idea. Though, the apartment was mine! I didn't care, I loved it. I walked outside, and I was in the heart of the west village. I was living a dream, I lived in Greenwich Village.

I was happy. My huge 75 pound cast iron cauldron fit into the fireplace. The mantle became a fantastic altar. Everything was coming together. I created another altar on a large window seat. Naturally I thanked the pantheons for this gift. I also began to form an amazing coven made of several different traditions originally but eventually we all settled on my Egyptian pantheon. I was a well known Egyptian high priest. We were all learning and sharing what we knew. I was happy and the Coven became the beginnings of my first New York City Per-Ntjeru Temple. I had this wonderful place. I had a dream job and I was in love, which I will save for another time.

Still, something was missing. I began having dreams, or maybe astral projections, of traveling out to Long Island. I saw short stone-walls along the road leading into a place that looked like barracks. More Utilitarian than pretty. I grew up on Long Island and I knew where I was. I was traveling astrally to the North shore and there is in the town of Port Washington the wonderful North shore animal league. I had volunteered there when I was a junior in high school over the summer. I loved the place and I knew North Shore took good care of their animals. They were careful about whom they allowed to adopt their pets. For several days, I had these dreams or projections. I decided the apartment needed a cat and I firmly believed that was why these visions were happening. There was another reason: The building next to my apartment building is a very famous restaurant. I discovered every once in a while a mouse or two would show up and I hate traps so I knew a cat would keep them away. The dreams or projections became more vivid. I kept seeing myself chasing this grey cat who kept urging me to run after her. I remember in the visions walking into the front of the animal leagues doors and out of nowhere a woman pointed me to the cat rooms. There were so many needy cats and kittens staring up at me saying, “Please, please pick me!”

I saw a smokey grey tabby with green eyes. She told me she was Shabti, and she came here for me. She beckoned “Come here, I'm waiting. I'll be here until you find me Michael. But hurry, hurry.” I woke up because it was too weird. For three more nights these visions came to me. Shabti was calling to me. I knew now I had to find her somewhere. In Ancient Egypt, *Shabtis* or more properly *Ushabati* or *Shawabti* are little enchanted figures found in tombs to do the work the deities ask of the person who had crossed into the next chapter of existence.

What most people who aren't familiar with Egyptian magic do not know is that the Egyptians also used them in their life. Ushabtis are like little vessels or spirit dolls which those who practice, can imbue with certain abilities to perform tasks in life as well as in the after life. The name *Ushabti* means “I will answer.” It has also been interpreted as “little companion or little helper.” I thought because of what the name meant it was a perfect name for a familiar “Shabti “was the cat that I would seek out to be my familiar.

On a Sunday afternoon which I had off, which was rare due to my job, my friend Edward called me and asked if I wanted to meet him for brunch. I agreed and went to Pennstation, boarded a train and got to Ed's station. Edward was seeking a puppy and he knew I was cat hunting. While we were having brunch we decided to go to the North Shore Animal League. It was the middle of September, a beautiful Sunday so of course the place was packed. It's the kind of thing families on Long Island like to do especially if they have children. We split up and I headed for the cat area on the other side of the compound.

I walked over to the kitten pen. She wasn't there. I sort of knew she wasn't a little kitten, though I was not feeling optimistic. My heart was pounding. I was excited and dreading going into the next few rooms. Ed had joined me. He did find a beagle mix puppy he wants to show me. I was relieved because I was cat-ed out.

I felt Shabti's vibe pounding in my head beckoning, but by the time we went to the puppy room, Ed had changed his mind. Now a little black scotty pup caught his eye and he started to fill out the paperwork. I felt compelled to go back to the cat section, there was a whole procedure for dog adoption so I knew it would take some time. It was less difficult to adopt a cat. I went through section after section. By now I was feeling hopeless. Ed came back. And asked me if I saw anything I wanted. Sadly no, I was sad and I just wanted to go home. Honestly I felt defeated. We were about to leave. I was disappointed and felt like this was a wasted trip. There was a loud commotion and a rumbling noise, suddenly a kennel worker came out of a back area to put some things on the wall.

She had a metal rolling cabinet with four tiers. It was turned around and I couldn't see what she was wheeling into the area. I heard several cats crying and was intrigued. The young lady turned the cages around so we could see them. In the second tier was a Smokey grey tabby female with Green eyes *Shabti looked at me she practically shouted, YES IT'S ME MICHAEL! SHABTI*

She put her paw out of the cage as if to say. Hey! GET ME OUTTA HERE! I immediately touched her paw. We were going to leave before they wheeled her out. My inner witch-voice told me to stay. I wouldn't be sorry. The young lady told me this cat had just been brought in; she was about 2 yrs old. She'd lived with an older couple who had passed away..

She hadn't seen the pentacle on my neck but next said sarcastically that the old woman was a witch. Then she noticed my pentacle and flushed. "And she still will be with a witch." I smirked! Ed laughed. I asked the girl to open the cage. Shabti practically leaped into my arms. When it was over, I told Shabti we were going home. Because I had worked there previously, North Shore knew I would be a good cat parent. I paid my fee. I was told she had an ear infection. I was given drops I had to put in her ears for two weeks, No problem! I got the rest of her items and they put her in a carrier.

Ed decided instead of me taking Shabti on the train he'd drive us back into the city. I held Shabti in my arms and she purred and nuzzled me. I was in love and Shabti knew she was home. When we arrived at the apartment, I had cast a spell in the meantime talking to the parking deities. It was a resounding success. If you've ever been to Manhattan on a Sunday you would know parking is nearly an impossible feat. For future note, always travel with a Witch. Ed found the perfect parking spot. We went upstairs to the apartment, and I put Shabti down. I didn't know how she'd react.

She walked around the apartment like she owned the place. If you have ever lived with a cat, they do own the place. We are merely their servants. I'd initially put a cat bed near the kitchen area which was near where her food and her little box were. She inspected it and to my surprise she instead pulled the cat bed next to the fireplace. As if to say she was not just a house cat! She was a familiar and needed to be near all the great magickal stuff. Next she went into the fireplace and jumped into my cauldron. She sat there looking up at me with only her eyes and her pointy little ears visible from the lip of the cauldron. She established herself the Alpha cat of the house. About a year later, friends brought me a Siamese kitten named Belle-Bell. Shabti let her know right away who was Queen of the house! Belle-Bell was a house cat but I loved her as well.

Whenever we cast a circle she was by my side. If I worked a spell she sat up on my shoulders almost as if to make sure I was doing it right. I believe she knew, maybe from a past life as a witch but believe me she knew how the rituals and spells should be done correctly. Shabti was an amazing familiar. She graced my life for 18 years and then Bast called her to the Eternal Temple. From time to time she still visits, even though I've moved several times since she crossed over. Now, Oliver is in my life and is my big wonderful Orange Tabby. I believe that Shabti whispered to Bast to send me a new familiar and Oliver fulfills all that is required of a familiar. I feel protected and empowered by my living and spirit familiars. I know that Shabti still watches us from her place in the temple of Bast on the other side of the rainbow. I wish that all of you find the joy I have with my living and past Familiars. Blessings!

This is Shabti. My much beloved much missed Familiar 1988-2006



Discovering Astrology's Big Three

By Alex Aloma

Recently, while learning more about astrology, I came across something astrologers call “the Big Three”. Like many people, I always thought astrology was mostly about your Sun sign, the one you see in horoscopes in magazines or online. But as I started reading more, I discovered that the Sun sign is only one small part of a much bigger picture.

The Big Three refer to the Sun, the Moon, and the Rising sign. These three parts of a birth chart are often used by astrologers to understand the most important parts of a person’s personality. The Sun sign is the one most people already know. It represents your basic personality and the qualities that shape who you are. It is connected to your sense of self and the traits that guide you through life. When someone says, “I’m a Leo” or “I’m a Capricorn”, they are talking about their Sun sign. This sign is determined by the date you were born and is the foundation of most horoscopes.

The Moon sign is a little different. While the Sun shows your outer personality, the Moon represents your inner emotional world. It reflects how you feel, how you react to situations, and what makes you feel secure. The Moon sign can explain why two people with the same Sun sign can still behave very differently; it’s because their Moon signs are different.

The Rising sign, also known as the Ascendant, is the zodiac sign that was rising on the eastern horizon at the exact moment you were born, not only by your birth date but also by your exact birth time and location. Astrologers often say the Rising sign represents how others see you and the way you naturally present yourself to the world.

What makes the Big Three interesting is how these three signs work together. Each one represents a different part of who you are:

- The Sun shows your core personality and sense of identity.
- The Moon shows your emotions and inner feelings.
- The Rising sign shows how you appear to others and how you step into the world

Even though I found my chart not 100% on target, there were some major things that sang true, especially as having Cancer in my Sun sign; emotionally sensitive, tenacious and imaginative, loyal and artistic. Through digging deeper, I came across new discoveries about myself and it allowed me to reflect more deeply on certain aspects of my personality. When people begin exploring astrology beyond simple horoscopes, learning their Big Three is often the first step. It adds more depth and meaning to astrology and helps explain why people can be complex and unique. For many witches and spiritual seekers, understanding these three parts of a birth chart opens the door to a deeper connection with astrology. Instead of seeing astrology as simple predictions, it becomes more like a map of personality, emotions. Discovering your Big Three can feel a little like discovering new pieces of yourself, parts that were there all along.

Alex Aloma (Digital Creation Supervisor)



My name is Alexander Aloma, and art has been a driving force in my life for as long as I can remember. Creativity has always been more than a skill to me. It’s been a way of seeing the world and finding meaning in it. Over the years, that passion grew into a vision to build something of my own, a brand that celebrates imagination, connection, and the beauty of collaboration. Starting a freelance business was both a dream and a journey one that taught me the power of bringing ideas to life alongside others who share that same spark. Working with creative minds to turn vision into reality has become my purpose, and it continues to inspire me every day. Through it all, my son Matt has been by my side, helping to keep that energy, belief, and support so I can keep that dream alive. I have built more than a brand, it’s about believing in the magic that happens when imagination meets heart.

Gods and Goddesses

South American

Araucania Indian

Menechen

Supreme God

Araucania Indian (Southern Andes)

Also known as Pillan (Heaven) and west of the Andes Guena-

Pillan (Spirit of Heaven)

Aymara Indian

Acacila

Animistic Spirit

Aymara Indian (Peru, Bolivia, Titicaca Basin)

One of a group of vaguely defined beings who control the weather, including rain, hail and frost.

Aztec

Acolmitzli (Shoulderlion)

Minor chthonic underworld God

Aztec (Classical Mesoamerican) Mexico

One of the deities collectively classified as the Mictlantecuhtli Complex.

Acolnahuacatl

Minor chthonic underworld God

Aztec (Classical Mesoamerican) Mexico

One of the deities collectively classified as the Mictlantecuhtli Complex.

Amimitl

Minor god of lakes and fish hunters

Aztec (Classical Mesoamerican) Mexico

One of the deities collectively classified as the Mixcoatlcamaxtli Complex.

Atl

Creator God

Aztec (Classical Mesoamerican) Mexico

The sun deity representing the fourth of the five world ages each of which lasted for 2028 heavenly years, each heavenly year being fifty-two terrestrial years. Assigned to water and presided over by Chalchiuhtlicue. According to tradition, the age ended in a cataclysmic destruction caused by a deluge during which all the human population were turned into fish. Illustrated by the "Stone of the Four Suns" [The Peabody Museum] and 4 (Atl) Atonatiuh and Chalchiutononatiuh.

Atlahua

Minor god of lakes and fish hunters

Aztec (Classical Mesoamerican) Mexico

One of the group classified as the Mixcoatlcamaxtli Complex. In Aztec mythology, Atlahua, Ahtlahua, Atlahoa, Atlava, or Atlaaa (A'tlawaa) was a water god (the blue version of Tlaloc, the Tlaloc from the south), fisherman and archer. There were said to be a least four ancient Aztec temples at which he was worshipped, the tallest supposedly being over 200 feet tall (61 meters). The Aztecs prayed to him when there were deaths in the water, such as when Hernando Cortez conquered Tenochtitlan (the Ancient Aztec capitol on a lake, now Mexico City), and the lake was said to be "floating with heads and corpses."

Camaxtli

God of War

Aztec (Classical Mesoamerican) Mexico

Also a deity of hunting and fire who received human sacrifice of captured prisoners. According to tradition, the sun god Tezcatlipoca transformed himself into Mixcoatl-Camaxtli to make fire by twirling the sacred fire sticks.

Ce Acatl

Minor creator god

Aztec (Classical Mesoamerican) Mexico

One of the deities collectively classified as the *Quetzacoatl* Complex also. Acatl.

Centeocihuatl

Maize goddess

Aztec (Classical Mesoamerican) Mexico

Represented at various sites including Tula (Hildago). According to the codices *Borgia*, *Cospi*, and *Fejeverly-Mayer* she is also one of four temple deities. Also Centeotl.



Monthly Correspondences

April

Other Names:	Aprillius, Ostermonath, Eosturmonath
Moon:	Growing Moon, Pink Moon, Phlox Moon, Sprouting Grass Moon, Egg Moon, Planter's Moon, Peony Moon, Flower Moon, Wildcat Moon, Seed Moon, Awakening Moon, Fish Moon.
Element:	Fire, Earth
Gender:	Masculine
Herbs:	Basil, Chives, Dragon's Blood, Geranium, Thistle, Dandelion, Lavender, Jasmine, Mint
Colors:	Gold, Red, Pastels, Pink, Green, Yellow
Flowers:	Daisy, Sweet Pea, Daffodil, Dandelion, Lavender, Tulip, Jasmine
Scents:	Bergamot, Bay, Patchouli, Pine
Stones:	Diamond, Garnet, Ruby, Sard, Clear Quartz, Rose Quartz, Green Aventurine
Trees:	Bay, Hazel, Pine
Animals:	Bears, Rabbits, Wolf
Birds:	Hawk, Magpie
Spirits:	Plant Faeries
Goddesses:	Anahita, Aphrodite, Artemis, Astarte, Bast, Ceres, Eostre, Erzulie, Hathor, Ishtar, Kali, Terra, Venus
Gods:	Ying Hua
Power Areas:	Energy in creating and producing, balance is returned to the nerves, change, self-confidence, self-reliance, take advantage of opportunities, time to work on emotional turmoil and get your temper into perspective.
Astrology:	Aries, Taurus
Birthstone:	Diamond
Symbols:	Eggs, Rabbits, Flowers, Seeds
Themes:	Renewal, Prosperity, Manifestation, Positive Change, New Opportunities.



Mycology
Archer's Stinkhorn
Clathrus archeri



Common Name:	Archer's Stinkhorn
Botanical Name:	<i>Clathrus archeri</i>
Order:	Phalleles
Family:	Phallaceae
Description:	The young fungus erupts from the suberumpent egg by forming into four to seven elongated arms initially erect and attached at the top. The arms then unfold to reveal a pinkish-red interior cover with dark-olive spore-containing gleba.
Egg:	4-6 x 3-4 cm, slightly buried in the ground, peridium pinkish-white tinged with brown, when cut a gelatinous layer appears and, at the center, the pinkish-white embryo of the carpophore is seen.
Arms:	12 cm long, fragile, red, tapering pinkish-white, gleba on inner surface of the arms, dark greenish, mucilaginous. Odor fetid.
Spores:	5-7 x 2-2.5 μ ; Elliptical, smooth, grayish. Spore print gray
Edibility:	Undefined, not recommended for consumption.
Season:	Summer
Habitat:	In warm regions, on ground with plenty of rotting ligneous fragments, in acid soils, in broadleaf woods.
Range:	Widely distributed in North America
Comments:	Stinkhorns resemble puffballs when they first appear although a cross-section of their egg reveals a heterogeneous, usually multicolored context. As they develop they assume a variety of exotic shapes. Most are easily discovered by their odor before they are actually seen. They are disseminated by flies who feed on the slimy fetid spore mass.
Bibliography:	Simon and Schuster's Guide to Mushrooms by Gary H. Lincoff Copyright©1981 Arnoldo Mondodori ref.353

Regardless of the fact that this mushroom is edible it is highly advised that before consuming any wild mushrooms that you consult with a professional mycologist. Many mushrooms are poisonous and look similar to each other.

April 2026

SUNDAY	MONDAY	TUESDAY	WEDNESDAY	THURSDAY	FRIDAY	SATURDAY
			1 April Fool's Day	2 Full Pink Moon in Libra	3	4
5	6	7	8	9	10	11
12	13	14	15 Celtic Tree Month of Willow	16	17 New Moon In Aries	18
19	20	21	22 Earth Day	23	24	25
26	27	28 Floralia	29	30		

April 1—April Fool's Day

April 2—Full Pink Moon in Libra

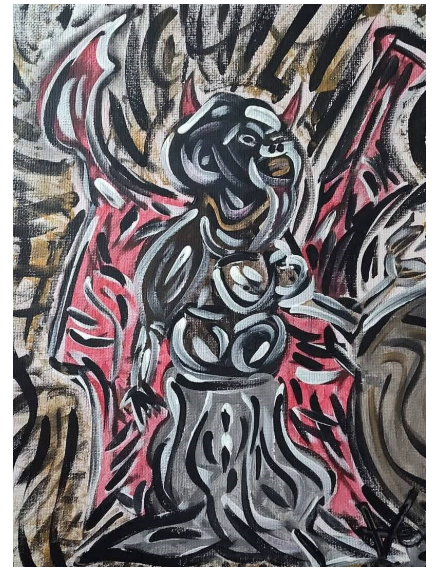
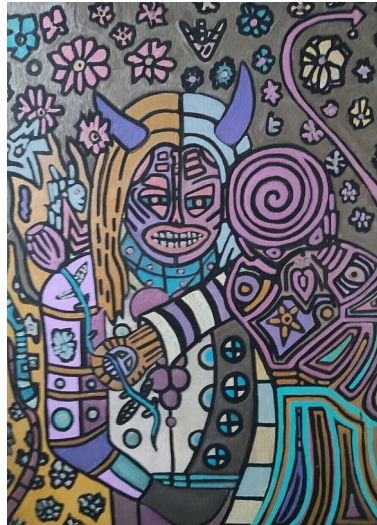
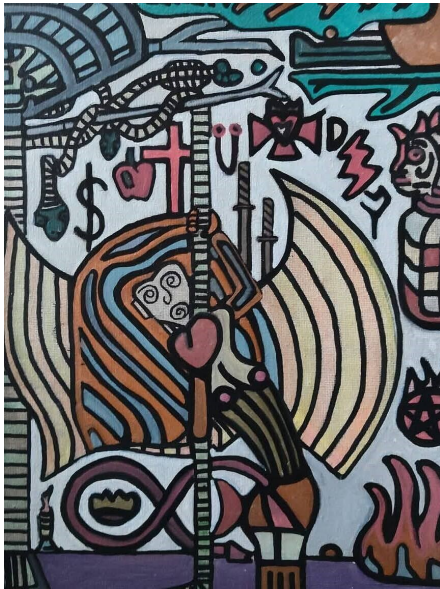
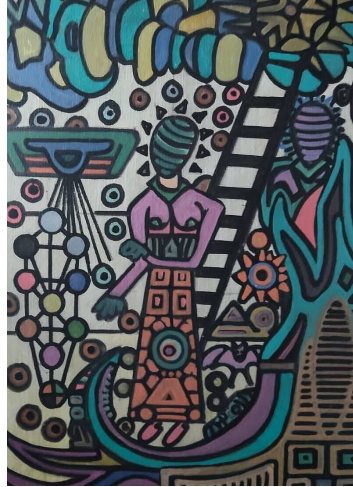
April 15—Celtic Tree Month of Willow

April 17—New Moon in Aries

April 22—Earth Day

April 28-May 3—Floralia

ENCHANTED EXHIBITIONS



Johnny Vex and Vex Nation have been growing over the past couple of years. It did all start with the name Vex which was a play on my last name created by my friend James and me. It was created right outside the Rothko Chapel and the first place it was signed into existence was in their visitor login book. It means EX Victim and Victimless Experience. My love for art at one point in my life in the last 10 years has been so intense. I can draw and finish a badass piece of art in 24 hours. Some pieces that are bigger will take longer but lately I'm very good at what I do. Though, don't think that I don't perfect each piece I have, I always do no matter what. The same goes for my clothing that has nothing but my own art on them. I always perfect them. I make my art symmetrical, and the clothes match up on the sides. It's nice to be interviewed here. Emily is super cool and has worked with me on several photo shoots, including The Beautiful, Ashur. The shoots were so professional, done outside, in water, and in snow. It's been beautiful. For those who would like to see my art you can find it on FB as Vex Art, and Vex Nation Art and Clothing Depot on FB as well. Both of these links are to my FB pages.

<https://www.facebook.com/VexNationArtClothing> **JOHNNY VEX WEARABLE ART**

What Is A Witch

by Mellissa Anderson

(copied with Permission from The Witches Brew Volume 13 Issue 1)

In our modern day, when everything appears to be instant gratification and many young and old appear to be in search for a different spirituality. I have seen in many places, people claiming to be a witch or pagan. So what is a witch? It might surprise you and some may not like the **TRUTH** of the matter, but its total truth.

It Takes a WITCH to MAKE A WITCH.

Witchcraft is by truth and definition The Craft of the Witch. One is not born knowing a craft, but over many years learns this craft, usually from a master craftsman.

Just last week, while visiting a small shop, I heard that story of "I was born a witch", by a 23 yr old girl who knew what she had seen on TV and read in a book on modern witchcraft. This is basically, THE BLIND LEADING THE BLIND.

Now I will not say the girl did not have aptitude and some natural talent, as everyone does. But I can guarantee, what she read in books did not contain the whole story fo the ancient practices as taught by competent teachers and mentors.

These individuals cause more confusion and problems than they solve. In a study of discrimination cases, almost 80 percent claiming religious discrimination fit into the category of untrained and totally unprepared to be considered a witch. Even by standard legal definition, they would lose their cases and then again blame the courts because they failed to meet the standard burden of the claim they put forward.

But we shall get into that later in this article. You can spin your claim, attempt to create your own version, but its simply not reality and more than likely will give very little results if any. So what is a witch?

In pre-Christian times, based on modern definition, everyone was a witch. Wise Women & Healers: were your early "witches", using plants and rituals for positive purposes like childbirth, healing, and divination, with figures appearing in ancient Mesopotamia, Greece (like the sorceress Circe), and Rome. They were the spiritual leaders of tribes and groups, those that knew the elements and natural world and how to connect with it for good or bad. Prior to Christianity, there was no mention of the word Witch.

One of the earliest mentions of the Old English plural form of "witch", wiccan appears in a passage from the prologue of King Alfred's Dombōc (law book) (Elsakkers 2010). King Alfred lived from 849-899.

Now, there is an earlier attestation of the related word wiccungdōm in Cædmon's Paraphrase that likely dates back to the 7th century (Thorpe. p. 223). However, for this article we will only include sources including the words wicce, wicca, wiccan and wiccecræft, as well as the verb wiccian., there is much debate, but linguistic speaking, this is the best and most correct use and appearance of the word.

In Alfred's Dombōc. The prologue of the Dombōc included sections of chapters 20-22 from the Book of Exodus, ostensibly translated into Old English and thus we first find the word wiccan in Alfred's "translation" of Exodus 22:18 ("Thou shalt not suffer a witch to live."): "ƿa fæmnan þe gewuniað onfon [anfon] gealdorcræftigan [galdorcræft] 7 scinlæcan 7 wiccan, ne læt þu ða libban." (The women who are wont to receive [and assist] gealdorcræftigan and scinlæcan and wiccan, let them not live.) (M. Elsakker , Gothic Bible, Vetus Latina and Visigothic Law: Evidence for a Septuagint-based Gothic Version of Exodus, Jan. 2005)

There is even debate on the word witch in that Exodus Passage, some say The Hebrew word mekhashefah refers to a woman who practices sorcery, witchcraft, or uses spells whereas others refer back to pharmakos, a Greek term covering poisoners or those using drugs and potions, suggesting a connection to harmful substances or deceptive practices.



Alfred's law book wasn't just the first to mention witches, it was also likely a large part of why "witches" became synonymous with maleficos (fordæða in Old Norse). Once included though, witches and witchcraft remained a part of the early English law codes, and persisted and expanded until its total repeal in 2008, with the end of Fraudulent Mediums Act of 1951.

There are even links to Alfred's translation to the Norse Edda Poem, Voluspa, but we won't get into that. It would take an entire twelve volume set. So our main point is that the word Witch did not exist before Christianity, and was used to describe evil people. Christianity transformed any other type of spirituality that was not them into the evil, crooked nose, pacy making evil doer.



A great way to become the dominant spiritual path on earth.

Ancient Mesopotamia (Sumeria, Assyria, Babylonia): As early as the 18th Century BCE, the Code of Hammurabi prescribed the death penalty for those found guilty of practicing harmful magic (sorcery), but they did not call it witchcraft. Mesopotamians differentiated between "good" and "bad" magic with "white" magic used for healing and "black" (kišpū) viewed as a malicious, anti-social act to be opposed by state-sanctioned exorcists.

Early Roman law (5th Century BCE) contained prohibitions against malicious magic that harmed crops or individuals, with major anti-witchcraft persecutions recorded in 331 BCE and 184-180 BCE. And again this reiterates the word Witch did not exist before Christianity.

Of course anyone studying a bit of history and the Middle Ages and the growth of Christianity can see this very clear. What was called Witchcraft then was simply the various spiritual paths of the people before the spread of Christianity. The Christian movement that had moved from the poor to the rich simply

used the term to classify others different than them in an effort to bring about social control. When this was too slow, they then began codifying and outlawing any practice that wasn't theirs.

So when did the word "witch" become so popular? From the historical evidence, in the 10th century Catholic Church released an official document called the Canon Episcopi. The document declared that witches were people who had been fooled by the Devil into believing they could perform magic.

The shift from folklore to intense fear and persecution occurred around 1400-1450, driven by church authorities labeling magical practice as heresy. This drove the witch trials and many other cultural changes against what were considered witches.

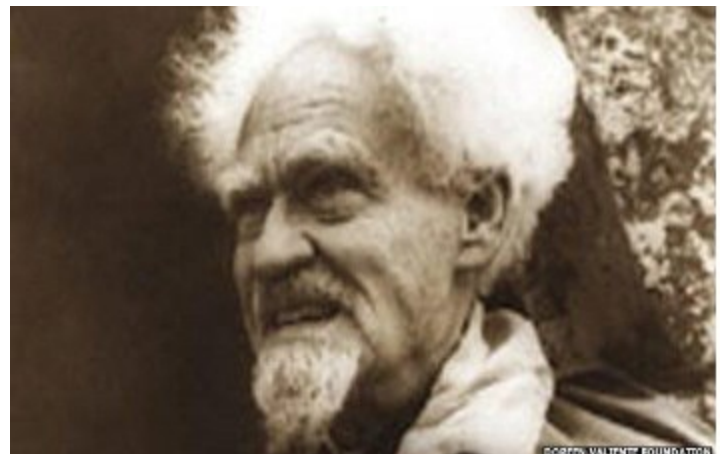
The term surged during the height of the witch hunts, spanning roughly 1400-1750, with the Salem Witch Trials (1692) marking a notable, later example of this usage. By the 17th century, "witch" was firmly established in the public imagination as a dangerous, typically female, practitioner of black magic. It remained as such until the 1830's the New Spiritualist Movement.

There have been many occult movements throughout history, but none called themselves witches until the 1830's.

Late Antiquity Foundations: Hermeticism, based on the writings of Hermes Trismegistus, is considered a foundational, ancient, and "hidden" tradition. Renaissance "Occult Sciences": the term "occult" was formerly linked to 16th-century practices like alchemy, astrology, and natural magic.

Medieval Roots: Earlier magical traditions, including early Kabbalah, appeared around the 12th century, paving the way for the later esoteric movements.

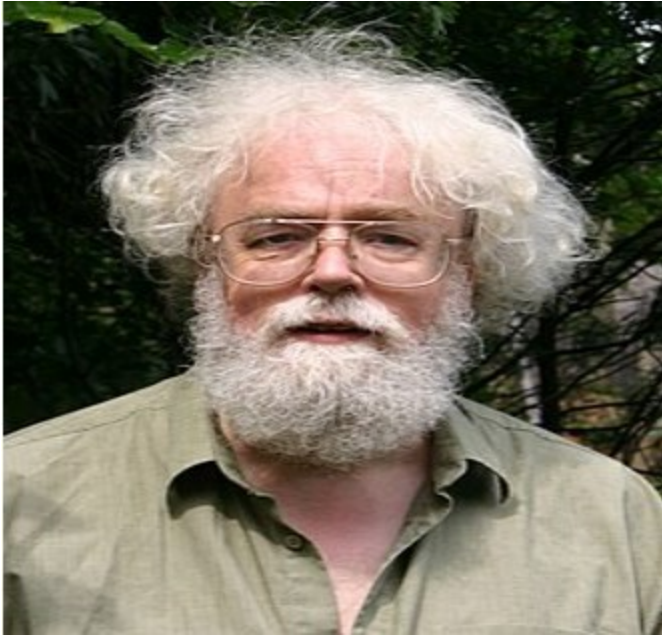
Modern Occultism: While based on ancient practices, the term occultism or witch was coined in the 1840's, with organized movements like the Hermetic Order of the Golden Dawn (1888) rising in the 19th century. And in walks Gerald B. Gardner.



Although Gardner had been self taught in his travels, He claims to have been initiated as a Witch in 1936. This has never been really confirmed by any documentation.

It proved to be a turning point for Gardner who, from that time, devoted himself to promoting his new-found religion.

Biographer and Wiccan initiate Philip Heselton said: "He wasn't a religious pioneer. What he did was to publicize it and write about it and he gradually became known through that and people made contact." "He initiated quite a lot of people into the Wiccan culture. He felt I was important that it survived."



Philip Heselton

After the war Gardner returned with his wife to London where he wrote a number of books, the best known being *Witchcraft Today*. Published in 1954, it offered readers an insight into the history and practices of the witch-cult and offered the press a feeding frenzy. The Great Witch Craze was afoot and Gardner loved the publicity.

Mr. Heselton added: "There were headlines about lurid rites and evil black magic but, in actual fact, quite a lot of people saw through it. He got lots of letters as a result of that, which helped him enormously." "It is rooted in early human beliefs about supernatural forces and spirits (usually Gods & Goddesses, Natural Spirits, and Ancestors), predating organized religion, with figures like healers and shamans using herbs and rituals for good or ill."

Gardner's theories were drawn from numerous sources, including Freemasonry, magical orders such as the Golden Dawn and fellow occultists, including Aleister Crowley. And again it must be pointed out the none called themselves Witches.

He also formulated the Wicca calendar of eight festivals, bringing together existing festivals from different traditions.

And as a side line began calling himself a Witch. Formulating the use of the word Wica (he spelled it with one C) to describe his group.

It is frequently claimed that Wicca originates from a root meaning "wise one" or "wise person", relating to village healers or those with knowledge of herbs, though some linguists argue the root is more closely related to magic/sorcery rather than knowledge.

By the time of his death in 1964, Gardnerian Wicca, as it became known, had spread to the United States and beyond. Estimates of the number of Wiccans worldwide range from 100,000 to 800,000,

So now that we have laid out a simple look at history. Anyone can practice the craft of the Witch with study and lots of practice. You also can call yourself witch, wise one, herbalist, or any other term you like. Witchcraft is simply that, a Craft, it is not a religion. It never was and the term "witch" never existed prior to Christianity and was not popular until Gerald Gardner.

Even then those walking the ancient paths usually referred to themselves as "Practitioners". So a witch you can be at any stage of life, but to be a Priest or Priestess you must be trained or ordained through a recognized organization or group of elders recognizing your degree of training to serve the people, As examples, to be a Priest or Priestess in some organizations:

In The Church of Jesus Christ of Latter Day Saints

(Latter Day Saint) Worthy Priesthood Holder: You must already hold the Melchizedek Priesthood. Calling/Appointment: High priests are usually ordained when called to a stake presidency, high council, or bishopric. You must have a recommendation: A Stake President or Bishopric member Identifies worthy, experienced men (often, but not exclusively, older) for this role.

In Wiccan Traditions (High Priest/Priestess) Join a Coven: Initiate into an established coven that operates under a degree system. Study and Training: Dedicate years to learning the rituals, theology, and traditions of the coven. Degree Progression: Advance through the degrees (usually up to the third degree). Hiving Off: Once qualified, you may "hive off" and start your own coven, becoming its High Priest or Priestess. **First Degree:** Usually a beginner, learning the basics. **Second Degree:** Advanced training, often acting as a Deputy to the High Priestess. **Third Degree:** The rank required for becoming a High Priest or Priestess, often involving teaching others.



Biblical/Hebrew Tradition Lineage: Historically, a high priest had to be a descendant of Aaron, from the tribe of Levi. **Divine Call:** According to Hebrews 5, no one takes this honor upon themselves; they are appointed by God to represent people, offer sacrifices for sins, and act with gentleness. From Hebrew:

“Every high priest is chosen from his fellow men and appointed to serve God on their behalf, to offer sacrifices and offerings for sins. Since he himself is weak in many ways, he is able to be gentle with those who are ignorant and make mistakes. And because he is himself weak, he must offer sacrifices not only for the sins of the people but also for his own sins. No one chooses for himself the honor of being a high priest. It is only by God’s call that a man is made a high priest.—just as Aaron was. In the same way, Christ did not take upon himself the honor of being a high priest. Instead, God said to him: “You are my Son; today I have become your Father.” He also said in another place, “You will be a priest forever, in the priestly order of Melchizedek,” In his life on earth Jesus made his prayers and requests with loud cries and tears to God, who could save him from death. Because he was humble and devoted, God heard him. But even though he was God’s Son, he learnt through his sufferings to be obedient. When he was made perfect, he became the source of eternal salvation for all those who obey him, and God declared him to be high priest in the priestly order of

Melchizedek. There is much we have to say about this matter, but it is hard to explain to you, because you are so slow to understand. There has been enough time for you to be teachers—yet you still need someone to teach you the first lessons of God’s message. Instead of eating solid food, you still have to drink milk. Anyone who has to drink milk is still a child, without any experience in the matter of right and wrong. Solid food, on the other hand, is for adults, who through practice are able to distinguish between good and evil.”

For the Kemeti Priest: Before a candidate could officially serve, they underwent specific induction rites: This was designed to open their way to become a pure and perfect person who would work with the Deities.

Education & Exams: Future priests (often the sons of current priests) attended the House of Life (Per-Ankh) to learn theology, ritual texts, and specialized skills like astronomy or medicine. They had to pass an exam at the end of their studies.

Physical Purification: The final stage of initiation involved a total physical transformation. The candidate was bathed in the temple’s sacred lake, shaved of all body hair (including eyebrows and eyelashes), and anointed with precious oils. Shaving of the hair is no longer done in modern times.

Circumcision: While common in Egyptian society, circumcision was often a mandatory requirement for priests, serving as a permanent mark of their status and purity (This is no longer done in modern times and actually is discouraged).

Vows of Purity: Initiates took an oath to remain pure (*wab*), which included strict dietary taboos, (like avoiding fish or wool) and maintaining sexual abstinence during their periods of service. This only applied to those dealing with the healing arts. But all priests were encouraged to be clean and pure in the service of the Gods. Sex was always a part of life and therefore always permissible but should be with love and trust.

There are many types of initiation in the Kemeti Path, and that depends of the student. The Kemeti lines are vast and varied to the warrior priest to the everyday minister of the people. Initiation would also be based on the temple you decided to serve and be a family with

We hope this information has been helpful and dispelled some of the modern myths you hear daily. To be a Witch is easy but to become a high priest or priestess is a bit more difficult.

You can practice the craft of the witch but remember it is a craft and not a religion. SO next time you hear religious discrimination, perhaps its best to state they are discriminating because of your craft and not your religion.

How to Subscribe

Today's Witch Magazine offers several subscription plans for our magazine. Each will be explained below. If you subscribe there will be additional percentages off the cover price. However there will be one cost for shipping and handling. Payments will be made according to the below instructions: However, fail to miss a payment and you immediately suspend your subscription and will not receive further copy. No Refunds, Returns, or Replacements will be offered.

Subscriptions:

Annual: An annual subscription is 25% off the cover price. The Cover price is \$14.95/issue, which is equivalent to paying \$179.40 the cost per year is \$134.55 + \$120.00 SH, for a total of \$254.55. The SH is one time fee and will not be pro-rated. I know this may sound a bit expensive but due to several issues with the post office and people not receiving their magazines, I now have to ship each issue Priority Mail so that tracking can be provided.

Semi-Annual: Semi-Annual subscription is 20% off the cover price. The cover price is \$14.95/issue which is equivalent to paying \$179.40. The cost of a Semi-Annual subscription is \$143.52 which will be divided into to 6 month payments of \$71.76 + \$60.00 SH which will be charged as follows: First Payment is \$131.76 and the next payment is \$131.76 . Again this may seem expensive but due to several issues with the post office and people not receiving their magazines, I now have to ship each issue Priority Mail so that tracking can be provided.

Quarterly: A Quarterly subscription is 15% off the cover price. The cover price is \$14.95/issue which is equivalent to paying \$179.40. The cost of a quarterly subscription is 152.49 which will be divided into 4 payments of \$38.12 + \$30.00 SH. which will be charged as follows. Each Payment is \$68.12 due every 3 months. Again this may seem expensive but due to several issues with the post office and people not receiving their magazines, I now have to ship each issue Priority Mail so that tracking can be provided.

Monthly: A monthly subscription is 10% off the cover price. The cover price is \$14.95/issue which is equivalent to paying \$179.40. The cost of a monthly subscription is \$13.45 + \$10.00 SH. which will be charged \$23.45. per month, due every month. Again this may sound expensive but due to several issues with the post office and people not receiving their magazines, I now have to ship each issue Priority Mail so that tracking can be provided.

If you opt not to purchase a subscription you can buy the Magazine from our website at cover price. No back issues will be provided with subscriptions so if you wish any of the previous issues you must purchase them individually from our site. Your subscription will start the month of the purchase and proceed until the same month of the following year if Annual, if Semi-annual it will proceed until the 6th issue, if Quarterly it will proceed unto the 3rd issue and if monthly it will proceed month to month from the month of purchase.



ADVERTISE WITH US

Advertising Rates:

If you wish to have your shop advertised with us, we have several affordable options available.

ANNUAL (12 Months)

A 1/10th to ¼ page advertisement is \$150.00 per year it will start the first month of release and proceed until the same month of the following year. It will be published in our monthly magazine as well as in a banner on our website.

A ½ page advertisement is \$250.00 per year like the previous it will start on the first month of release and proceed until the same month of the following year.

A Full page advertisement is \$450.00 per year. This is a limited quantity advertisement and will not be given on a select page. However, it will rotate throughout the magazine and be present in all issues for a full year's time.

Premium Space—Full Page Back or Center. \$650.00 only available for a full year. and must specify desired location, limited quantities available.

SEMI ANNUAL (6 Months)

A 1/10th to 1/4 page advertisement is \$82.50 per 6 months. It will start the first month of release and proceed until the 6th month following it. It will be published in our monthly magazine as well as in a banner on our website.

A 1/2 page advertisement is \$137.50 per 6 months. Like the previous it will start on the first month of release and proceed until the 6th month following.

QUARTERLY (3 Months)

A 1/10th to 1/4 page advertisement is \$46.00 per 3 months. It will start the first month of release and proceed until the 3rd month following it. It will be published in our monthly magazine as well as in a banner on our website.

A 1/2 page advertisement is 75.50 per 3 months. Like the previous it will start on the first month of release and proceed until the 3rd month following.

Please be aware all payments must be submitted with the ad no exceptions. Ad's submitted without payment will not be printed in the magazine.

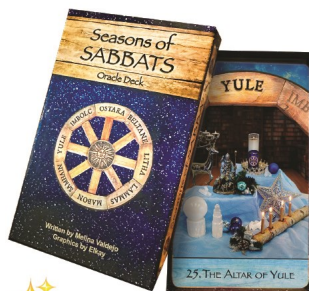
Seasons of SABBATS Oracle Deck

Connect with the magic of the Wheel of the Year!

This beautifully illustrated 47-card deck and 120-page guidebook helps you align with seasonal energies, deepen your spiritual practice, and reflect with intention.

Perfect for daily draws, rituals, journaling, or as a meaningful holiday gift, these cards bring clarity, inspiration, and empowerment to every season.

Honor the cycles of nature and awaken your inner wisdom—get your deck today!

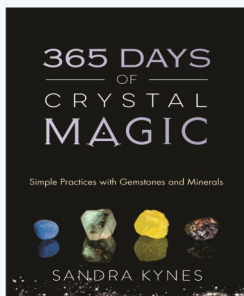
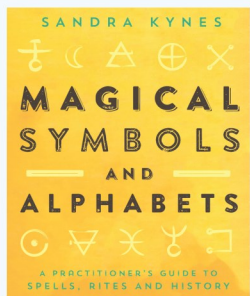
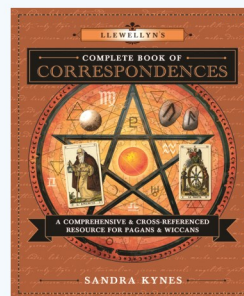
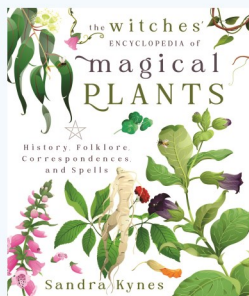
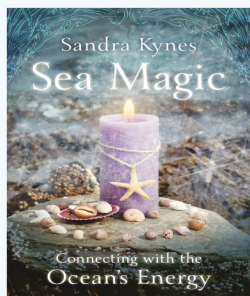


Buy the deck here: →

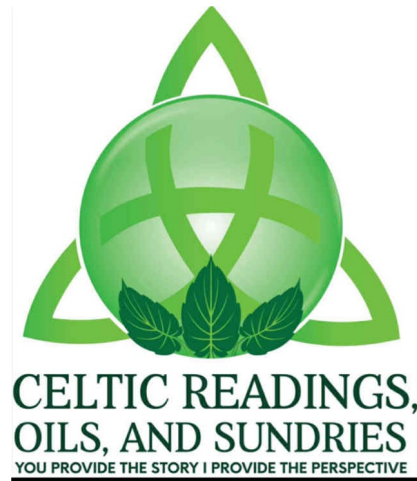
<https://pathwaysstl.com/seasons-of-sabbats-oracle-deck>



Explore the magic around you with books by Sandra Kynes



~ Available in stores and online ~
For details on these and other books visit www.kynes.net



Emily is the heart and soul behind Celtic Readings. Inspired by her Irish roots and deep love for mythology and history, she discovered tarot through an unexpected path: a college course that opened the door to something magical.

Each tarot reading is more than just cards—it's a story, a mirror to the human experience, and a moment to reconnect with your path. Whether you're seeking clarity, comfort, or just curious about what the cards have to say, she'd love to offer you a fresh perspective.

Contact her for a reading—and see what your story holds.

You can find her on Facebook at <https://tinyurl.com/3uau24ut> or you can email her @ Celticreadings1122@gmail.com

Message her on her phone @ 208-530-8842



Astrology by Brighid—Unlock Your True Purpose

Astrology by Brighid—Guiding Your Path with Astrological Insights

<https://www.astrologybybrighid.com/>

Unlock your True Potential and align yourself with your purpose by riding the energy waves of the Universe 1 hour consults are 65.00 35.00 for 30 minutes A referral of 2 new clients equals a free chart and astro planner for the year 419.351.9704 brighidsees@gmail.com You will be provided available times to choose from

TODAY'S WITCH
ENCHANTED MILESTONES

COVERED BRIDGE
PRESS LLC

1ST YEAR ANNIVERSARY

TODAY'S WITCH
ENCHANTED MILESTONES

COVERED BRIDGE
PRESS LLC

2ND YEAR ANNIVERSARY

Eclectic International Music Mix
Interesting and Informative Shows
Facebook Group & Page

International Pagan Radio

www.internationalpaganradio.com

SCAN LISTEN

CHANT TRANSFORM

W.C.A.S.-db
The Cauldron Radio

www.thecauldron.net

THE MAGIC OF TAROT

EDWARD SOTT AND EMILY THORNTON

Today's Witch
Ritual Workbook
&
Journal
Your Personal Journal and Ritual Grimoire For All
Your Ritual Needs.

The Alexian
SHOW

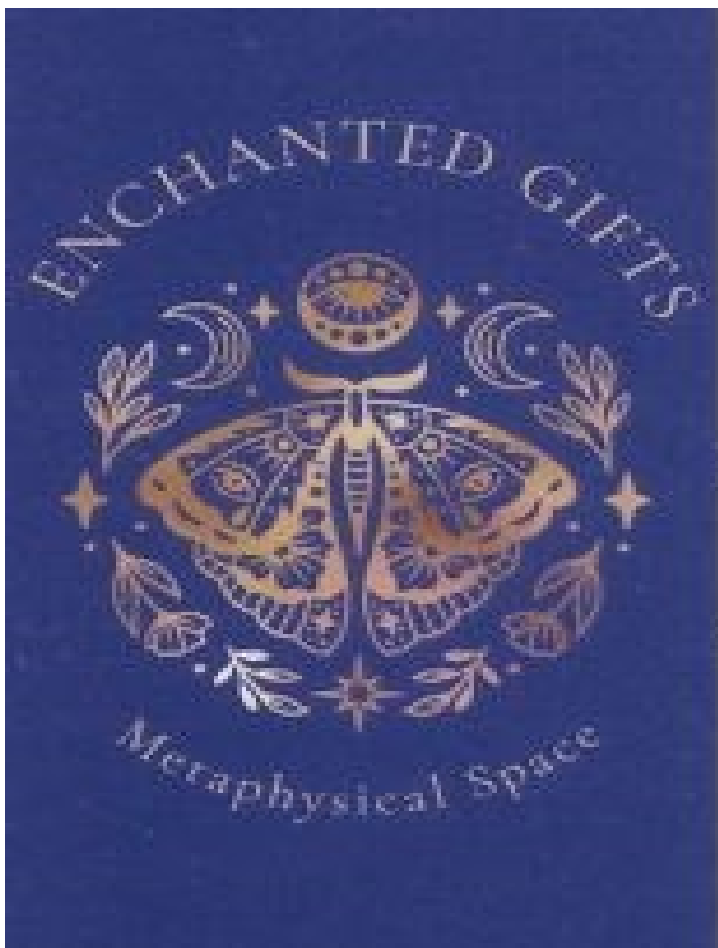
New Pagan guest monthly!

*Monthly LIVE show:
1st Sunday, 3pm ET*

**ARCANE TREASURES
GIVEAWAY!**

YouTube.com/LordAlexian
AlexianMusic.com

**DON'T FORGET TO
SUBSCRIBE**



Enchanted Gifts and Metaphysical Space has been an iconic part of Kansas City's history for nearly 30 years, providing an extensive array of metaphysical and Renaissance products, including stones, herbs, and books. As the city's oldest metaphysical store, we pride ourselves on our vast collection and unique offerings.

1825 S. Ridgeview Rd
Olathe, KS 66062
913-387-9442
enchantedgiftsofolatheks.com